

astræa®igloo

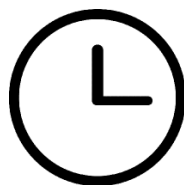
IGLOO L PLUS

Quick Installation Guide
COSTCO MODEL

**IGLOO MUST BE SECURED TO THE
GROUND USING THE FLOOR
CLAMPS PROVIDED IN THE KIT**



We recommend three (3)
people for this operation



5 Hours Needed



Quick installation video



astræa®igloo

www.astreea.com

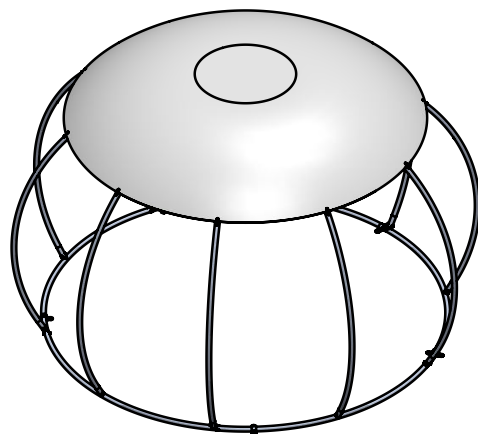
1. The frame



2. The door

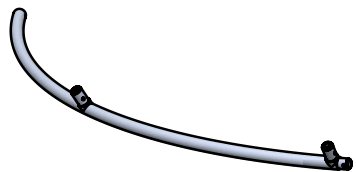


3. The umbrella



1. The frame

Components



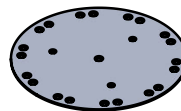
5 x base rails



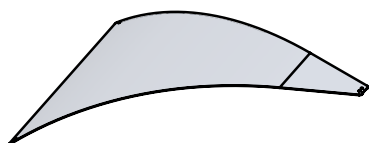
10 x lower poles



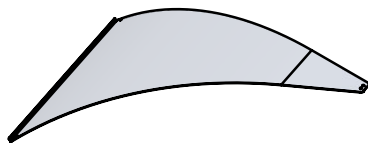
10 x upper poles



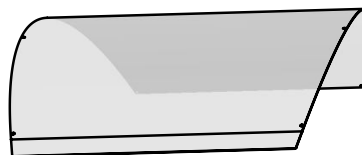
1 x support plate



9 x upper panels



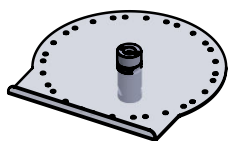
1 x upper door panel



9 x lower panels



8 x lower strip



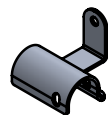
1 x central bolt assembly



1 x crown plate



8 x upper strips



1 x locking plate



1 x stop plate



40 x frame rings



5 x fixing clamps



2 x clothing racks



2 x M4x10 screws



54 x M6x8 screws



20 x M6x10 screws



20 x M6x12 screws



24 x M6x12 screws



16 x M6x20 screws



21 x M8x20 screws



10 x M8x25 screws



15 x M8x50 screws

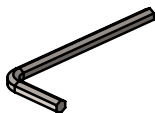


35 x M8 nuts

Tools included



Wrench no.13

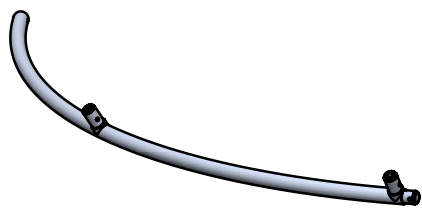


Allen key no.2.5, 3, 4, 5 and 6

1. The frame

1.1 Mounting the base rails, stop plate and locking plate

Components



5 x base rails



1 x locking plate



1 x stop plate

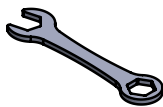


5 x M8 nuts

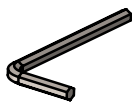


5 x M8x50 screws

Tools needed



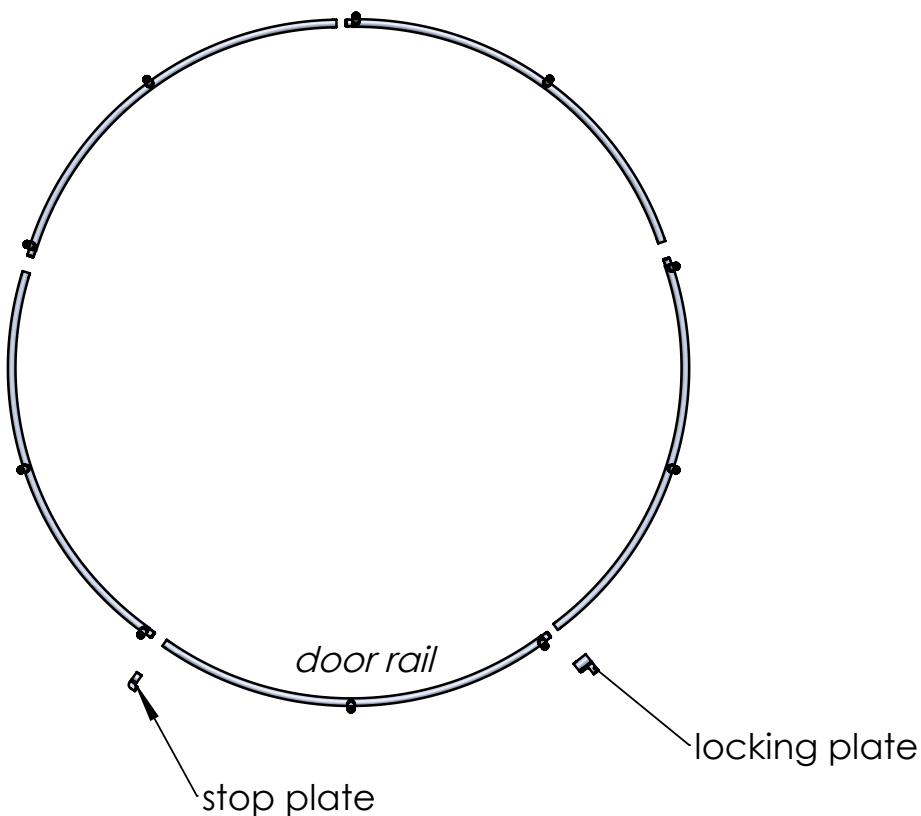
Wrench no.13



Allen key no.6

Place the base rails on the floor.

Consider one base rail as *door rail*.



1. The frame

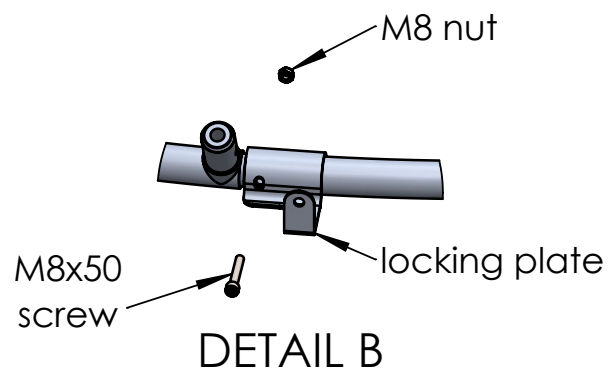
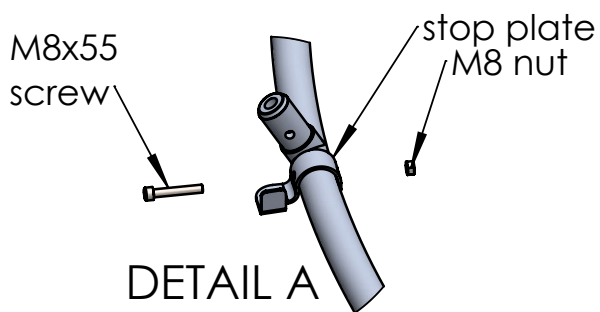
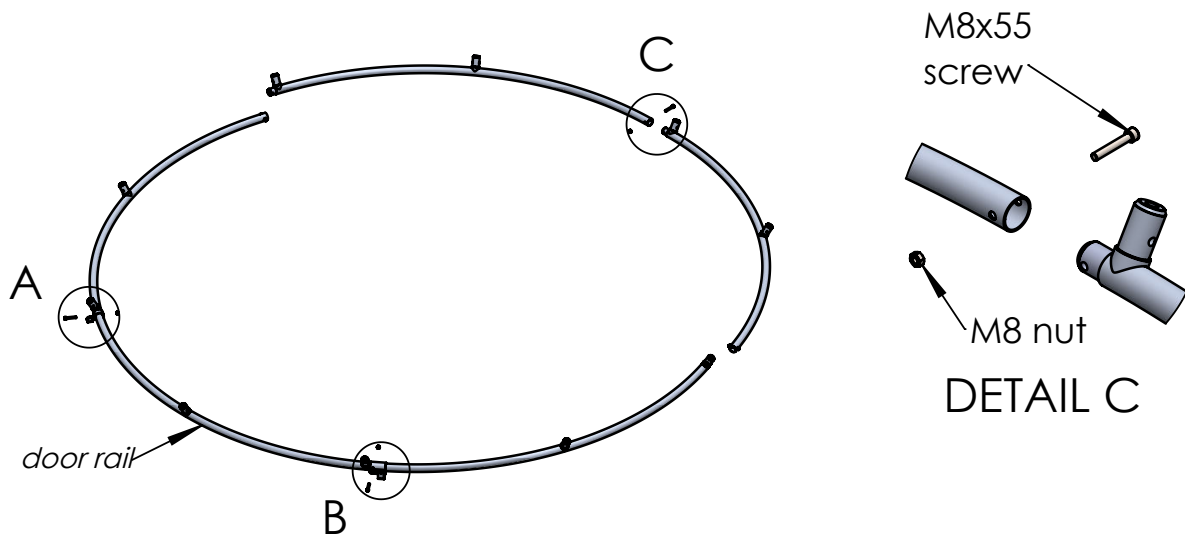
1.1 Mounting the base rails, stop plate and locking plate

Join the base rails on the left side and on the right side of the door rail.

Place the stop plate on the left side of the door rail and fix it with the same screw that fix the rails (detail A).

Place the locking plate on the right side of the door rail and fix it with the same screw that fix the rails (detail B).

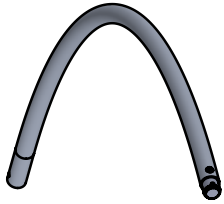
Join the other rails and fix them as shown in the detail C.
Tighten the screws on all 60° angle bolts of the base frame.



1. The frame

1.2 Mounting the lateral poles

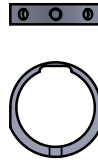
Components



10 x lower poles



10 x upper poles

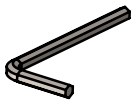


40 x frame rings



10 x M8x25 screws

Tools needed

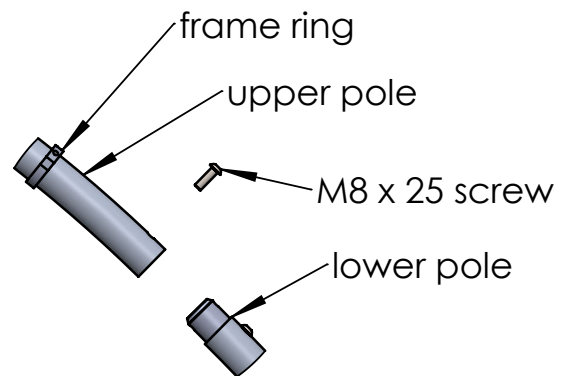
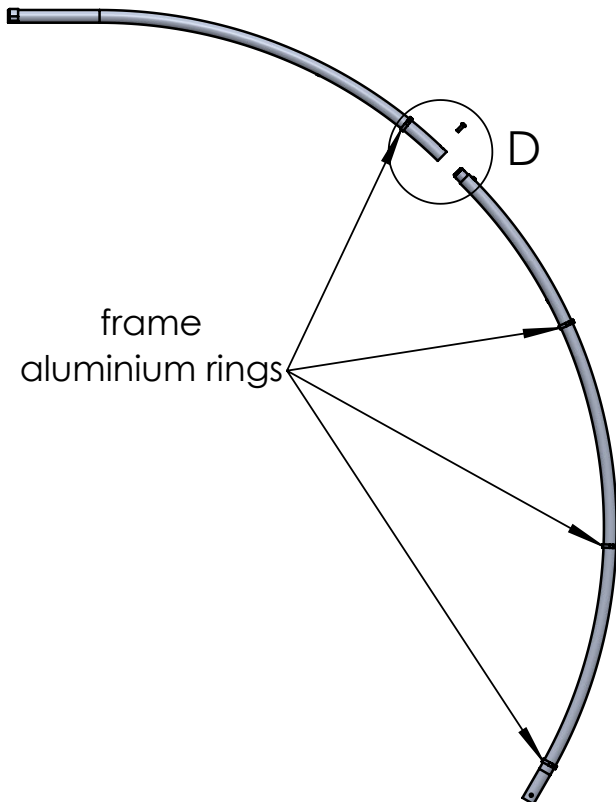


Allen key no.5

Insert 1pcs. of frame ring on the upper pole and 3pcs. on the lower pole.

Join the upper pole with the lower pole and fix it using the M8x25 screw.

Proceed in the same way for all 10 poles.



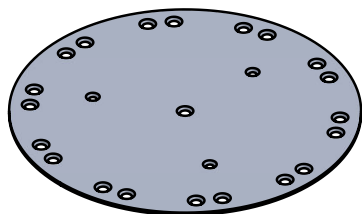
DETAIL D

*If there is a gap between the poles, unscrew the connecting bolt and move poles closer until gap disappears. The same applies to base connections.

1. The frame

1.3 Installing the support plate on the lateral pole

Components



1 x support plate



2 x M8x20 screws

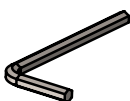


2 x M8 nuts

Tools needed

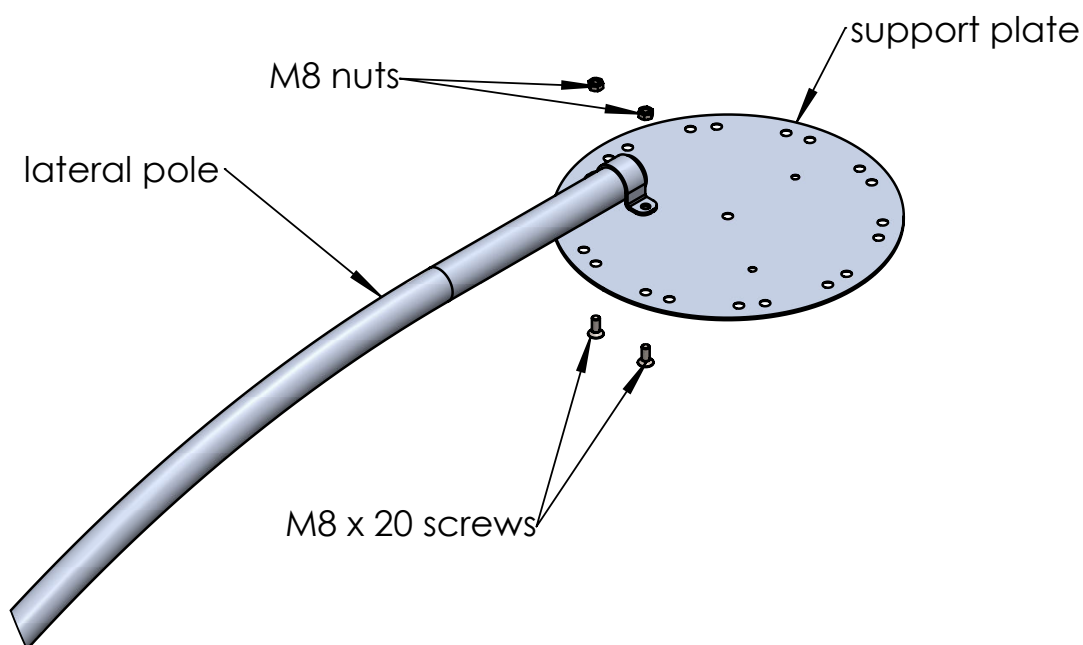


Wrench no.13



Allen key no.5

Attach the support plate on the lateral pole and fix it with 2 x M8x20 screws and 2 x M8 nuts



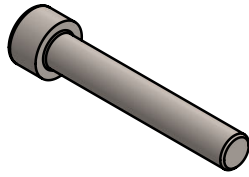
1. The frame

1.4 Mounting the lateral pole, with the support plate attached, on the base rail

Components

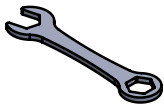


1 x M8 nuts

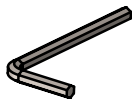


1 x M8x50 screws

Tools needed

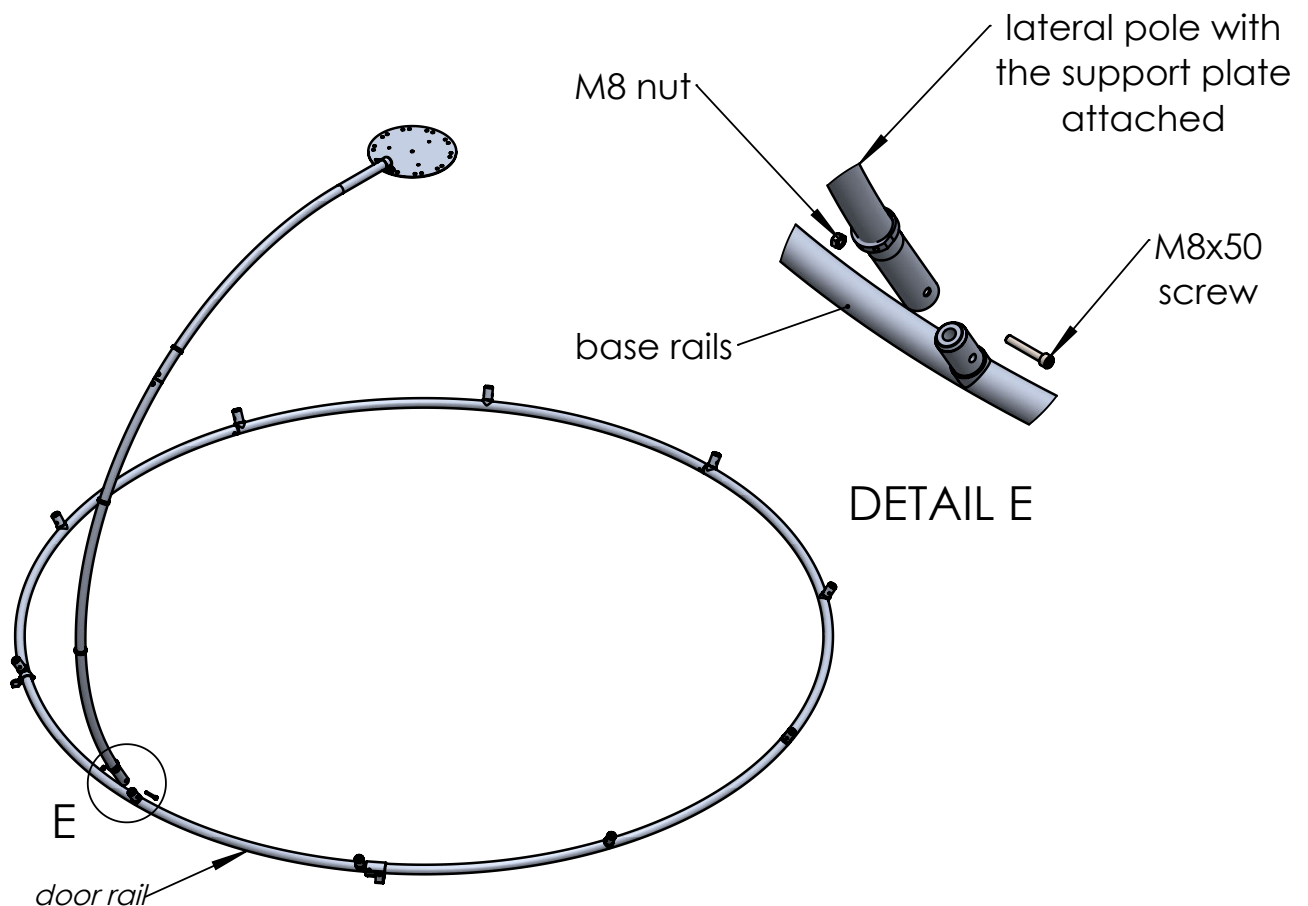


Wrench no.13



Allen key no.6

Mount the lateral pole, with the support plate attached, on the base rail and fix it with M8x50 screw and M8 nut.



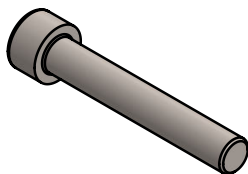
1. The frame

1.5 Mounting the second lateral pole

Components



3 x M8 nuts

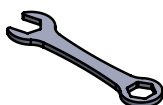


1 x M8x50 screws

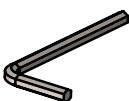


2 x M8x20 screws

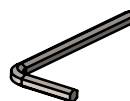
Tools needed



Wrench no.13

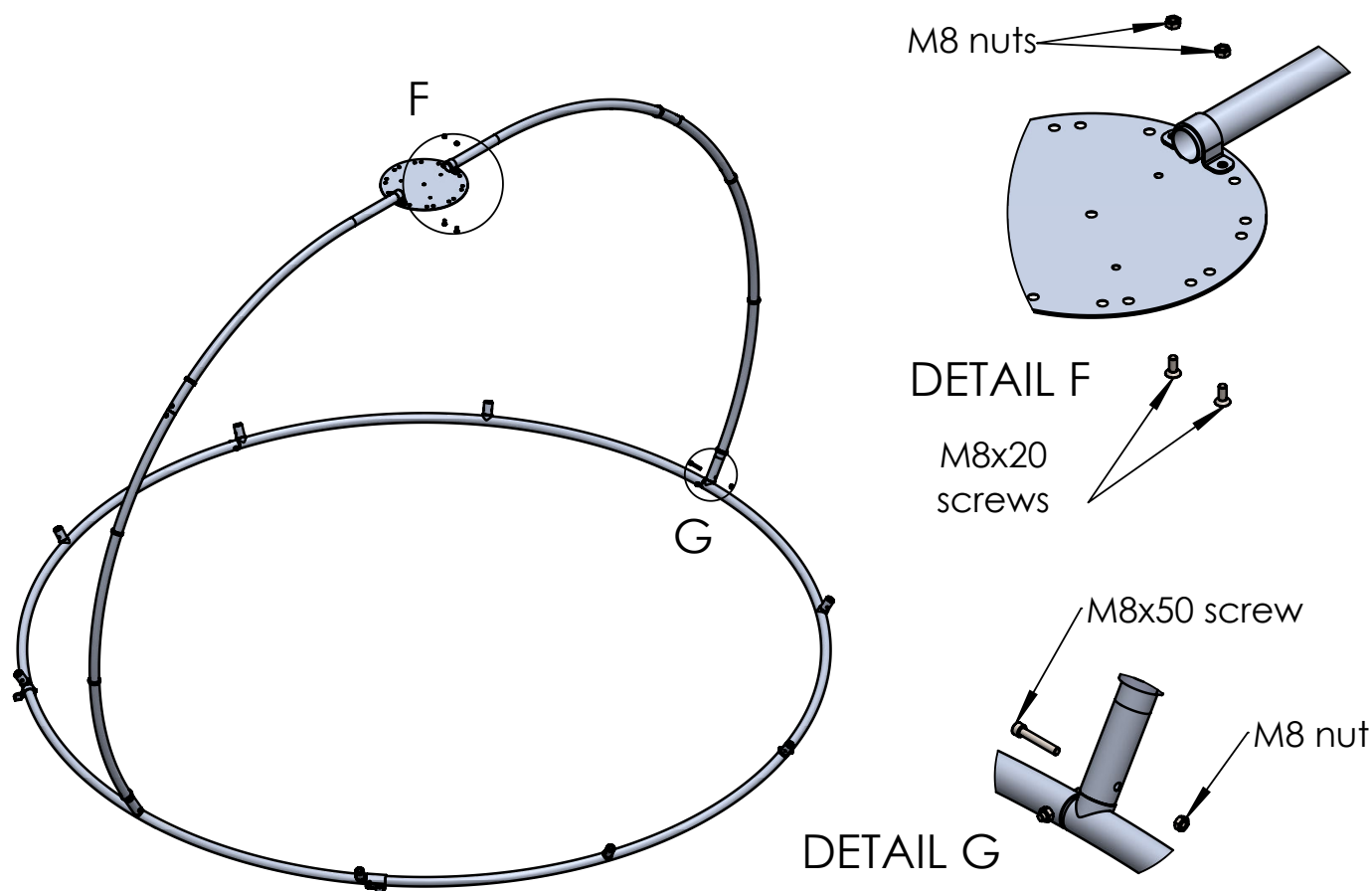


Allen key no.6



Allen key no.5

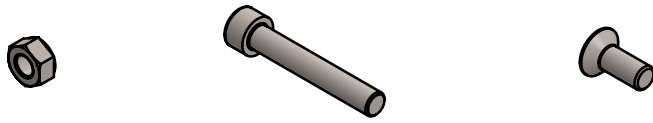
Mount the second lateral pole in the opposite of the first one and fix it in the upper part and the lower part as shown.



1. The frame

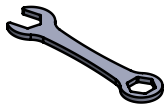
1.6 Mounting the other lateral poles and the crown plate

Components

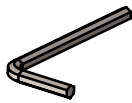


24 x M8 nuts 8 x M8x50 screws 16 x M8x20 screws

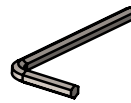
Tools needed



Wrench no.13

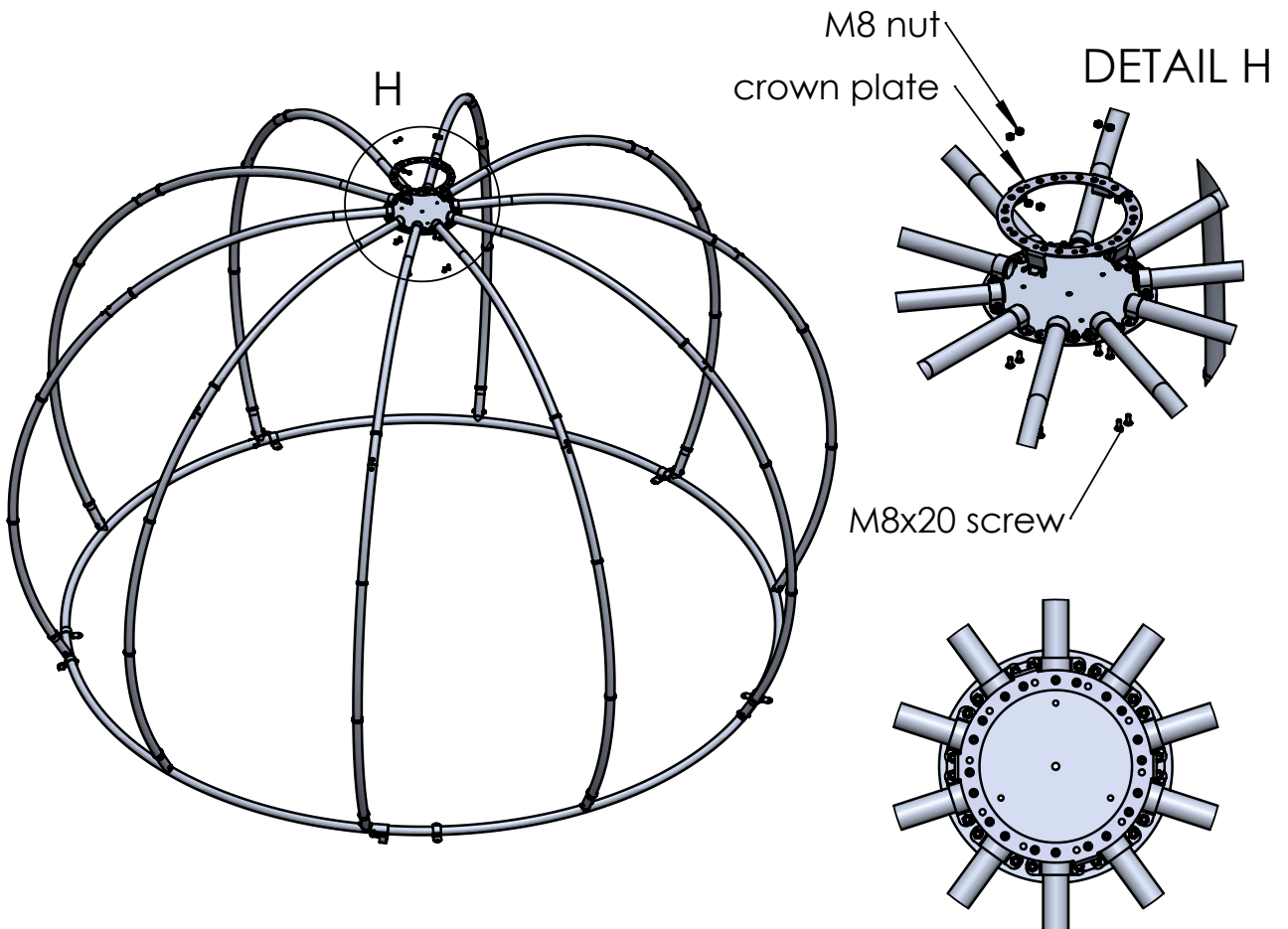


Allen key no.6



Allen key no.5

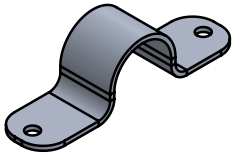
Mount the second lateral pole in the opposite of the first one and fix it in the upper part and the lower part as shown.



1. The frame

1.7 Fix the frame on the floor

Components

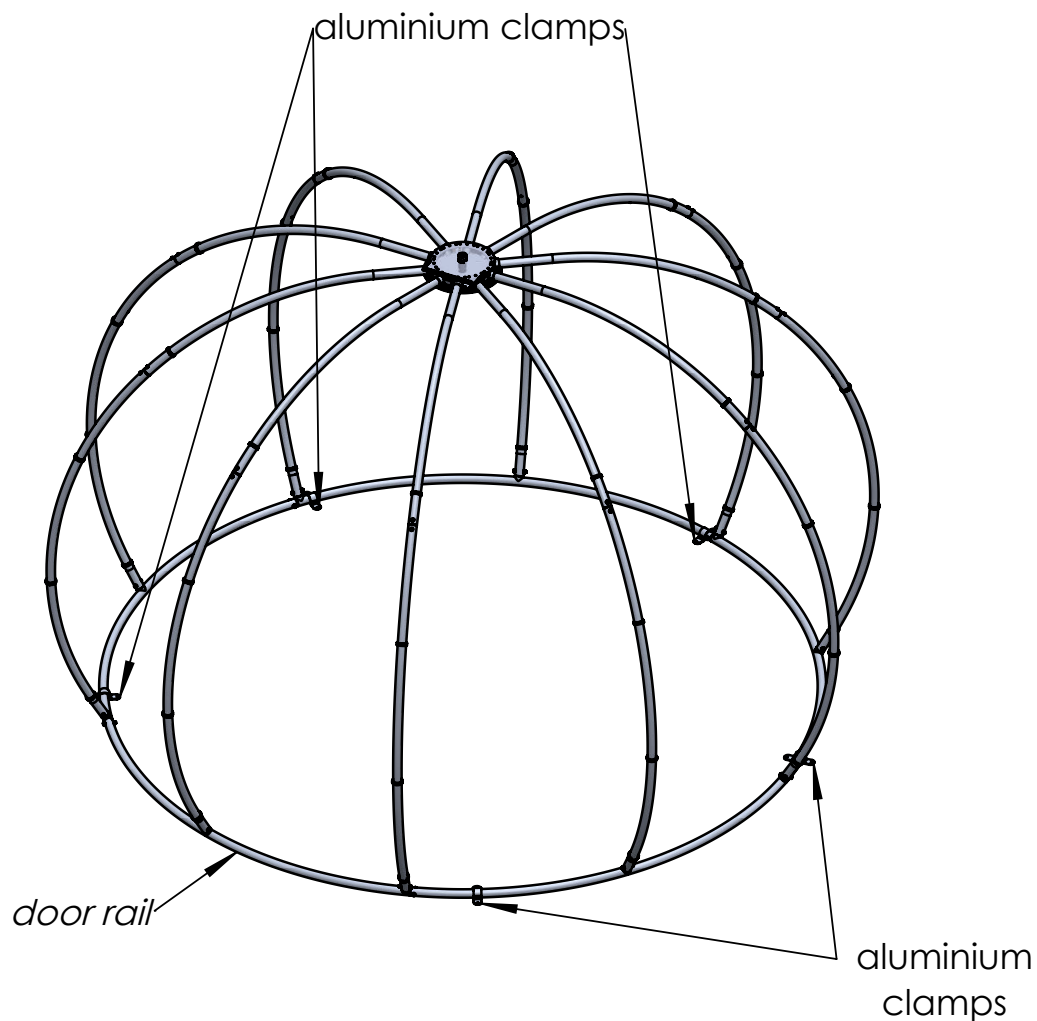


10 x M8 anchors
(not included)

5 x aluminium clamps

Place the aluminium clamps on the base rails.

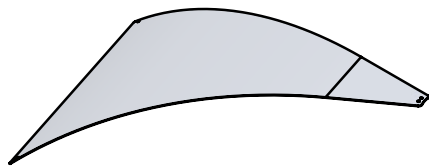
Do not mount them on the door rail.



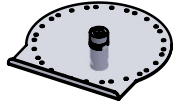
1. The frame

1.8 Installing the left door upper panel and the central bolt assy.

Components



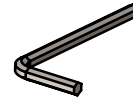
1 x upper panel



1 x central bolt assembly



2 x M6x12 screw



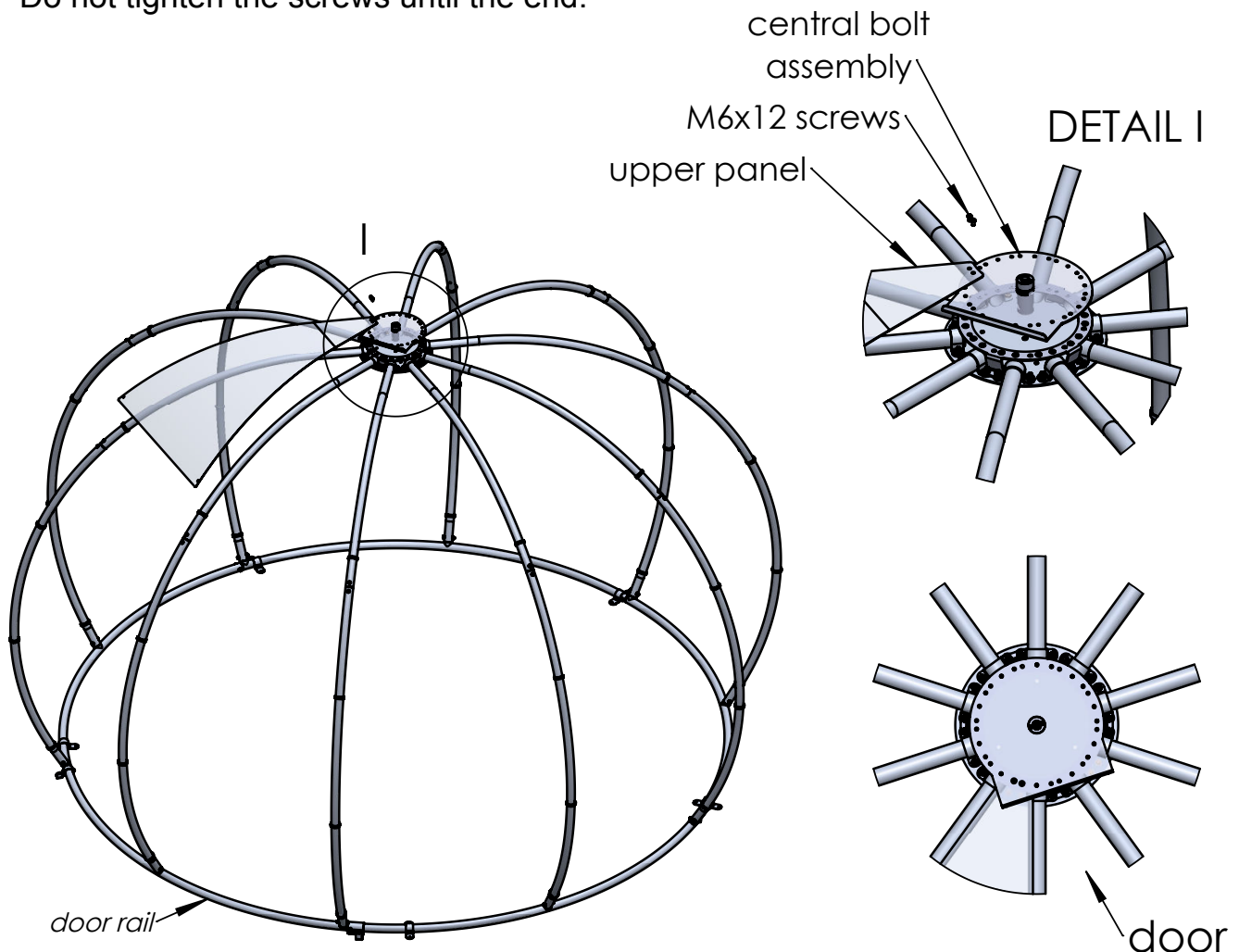
Tools needed

Allen key no.4

Place the central bolt assembly on the crown plate and position it with the bended part to the door rail.

Install the first upper panel on the left side of the door rail and fix it together with the central bolt assembly on the crown plate using 2pcs. of M6x12 screws.

Do not tighten the screws until the end.

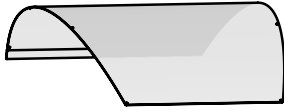


1. The frame

1.9 Install the left door lower panel

Components

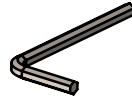
3 needed



lower panel



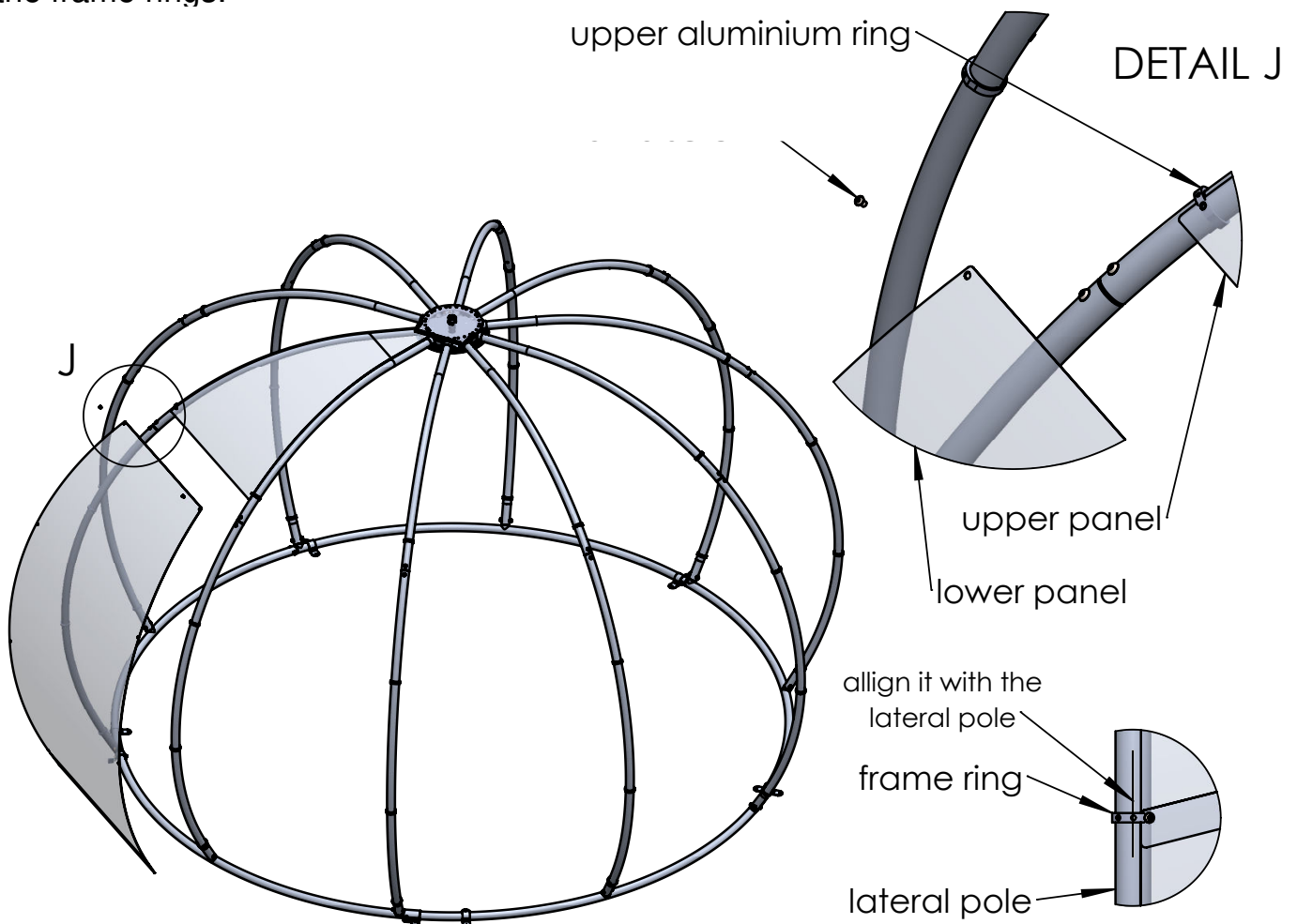
2 x M6x10
screw



Allen key no.4

Place the left door lower panel under the upper panel and align the lower holes of the upper panel with the upper holes of the lower panel. Use 2 pcs. of M6x10 screws and fix it on the upper frame rings. Make sure that the frame rings are aligned with the lateral pole.

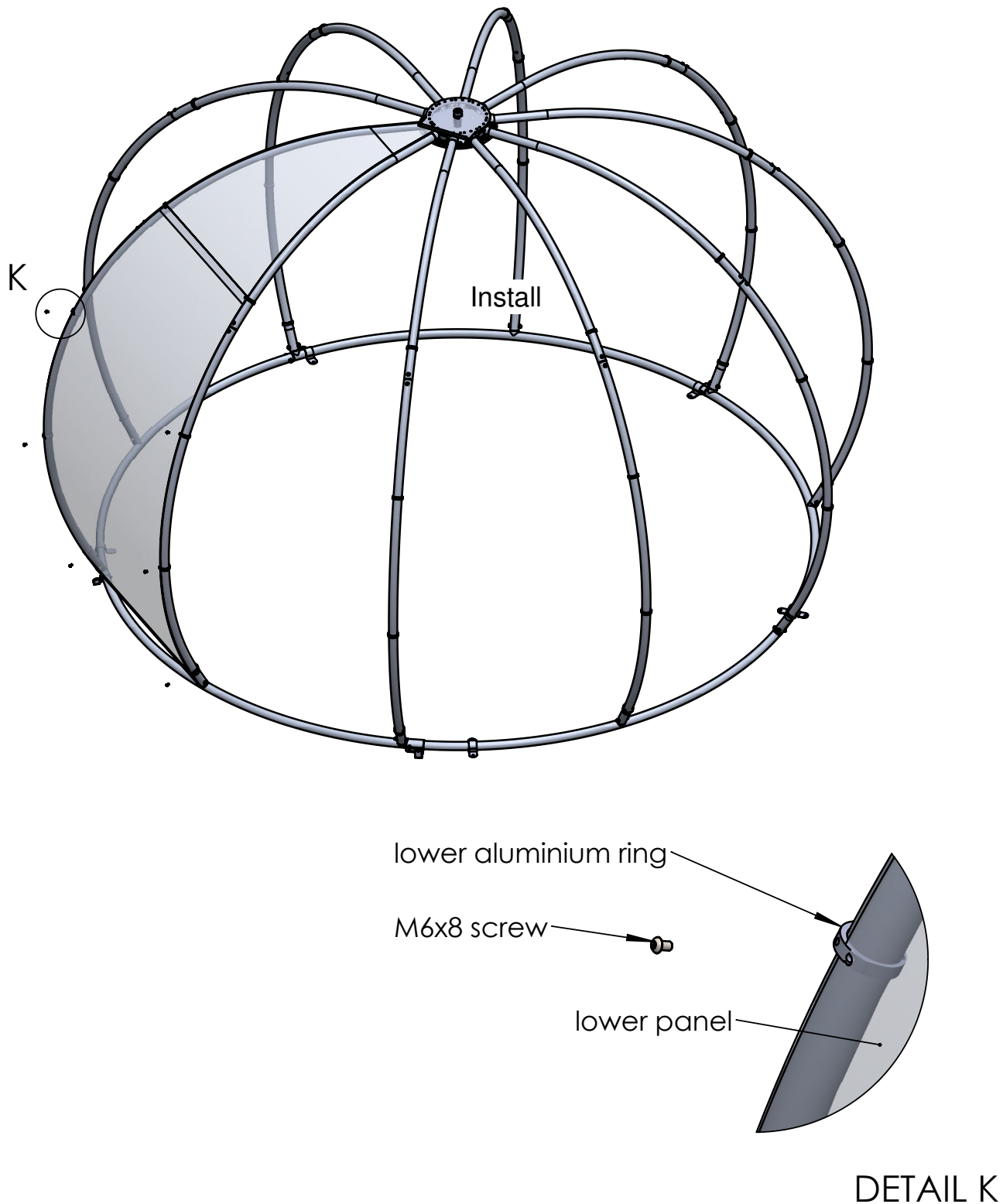
All the screws that are going to be fixed on the frame rings need to be tightened using the Allen key, not another tool that can damage the thread of the frame rings.



1. The frame

1.10 Install the left door lower panel

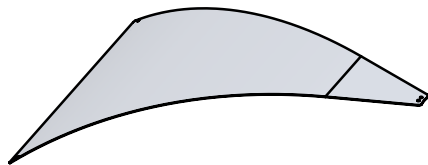
Fix the panel on the lower frame rings using 6pcs. of M6x8 screws.



1. The frame

1.11 Install the second upper panel

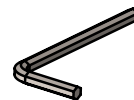
Components



1 x upper panel



2 x M6x12
screw

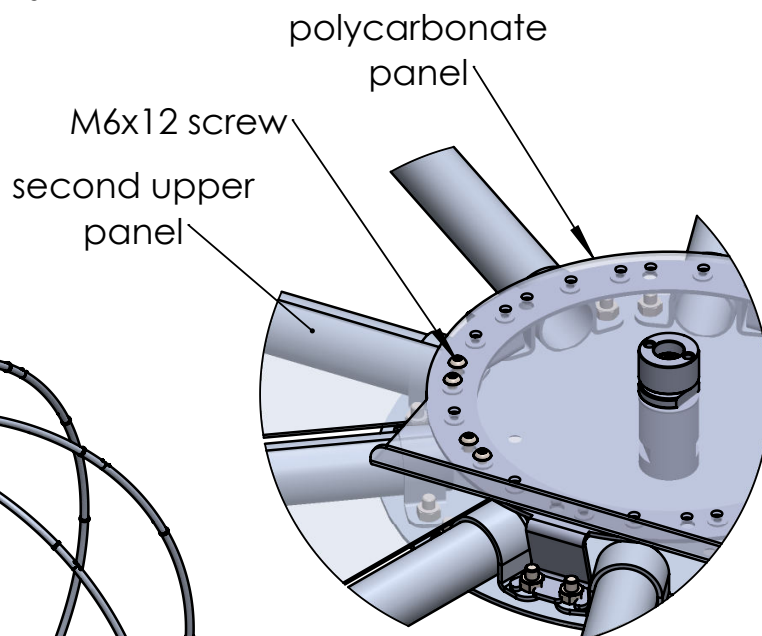
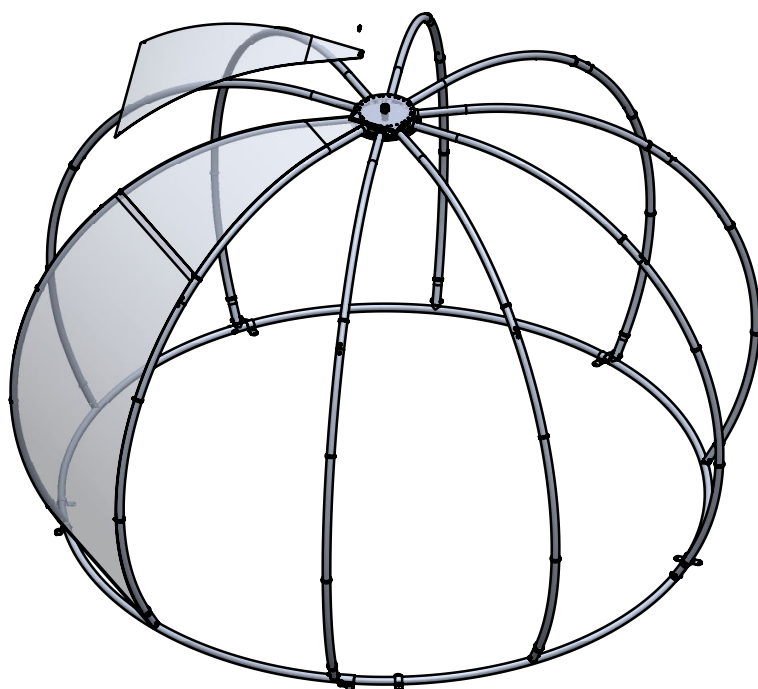


Allen key no.4

Tools needed

Install the second upper panel by insert the upper part of it under the polycarbonate disc of the central bolt assembly. Use 2 pcs. of M6x12 screws to fix together the upper panel and the polycarbonate disc on the crown plate.

Do not tighten the screws until the end.

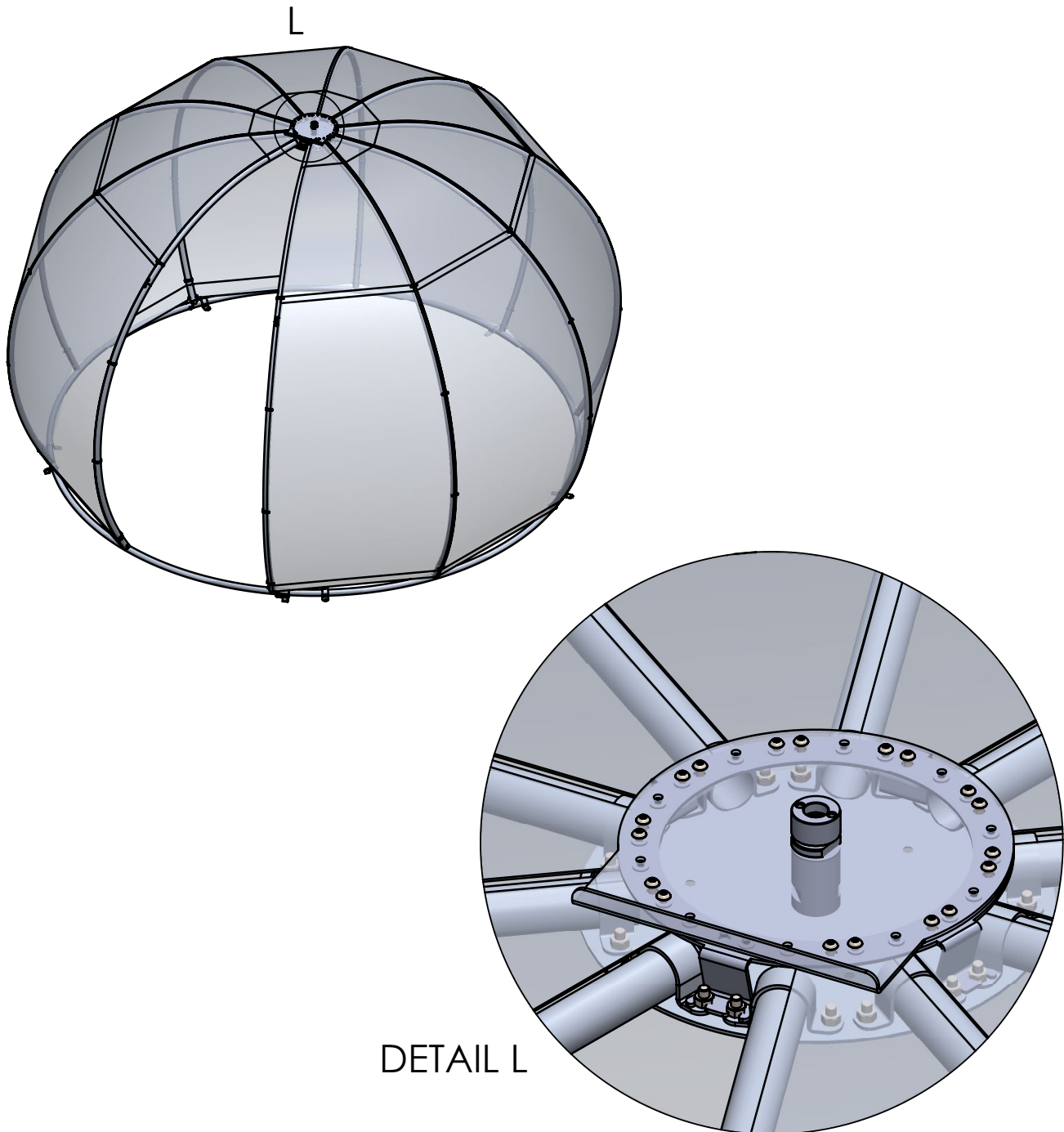


1. The frame

1.12 Install the other upper and lower panels

Install the other upper and lower panels in the same way as the previous ones were mounted.

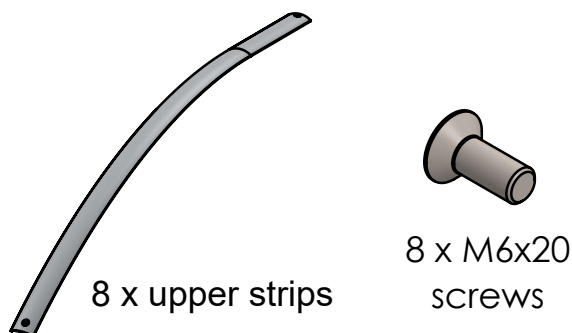
Do not tighten the M6 x 12 screws that fix the upper part of the upper panels until the upper door panel will be installed.



1. The frame

1.13 Install the upper strips

Components

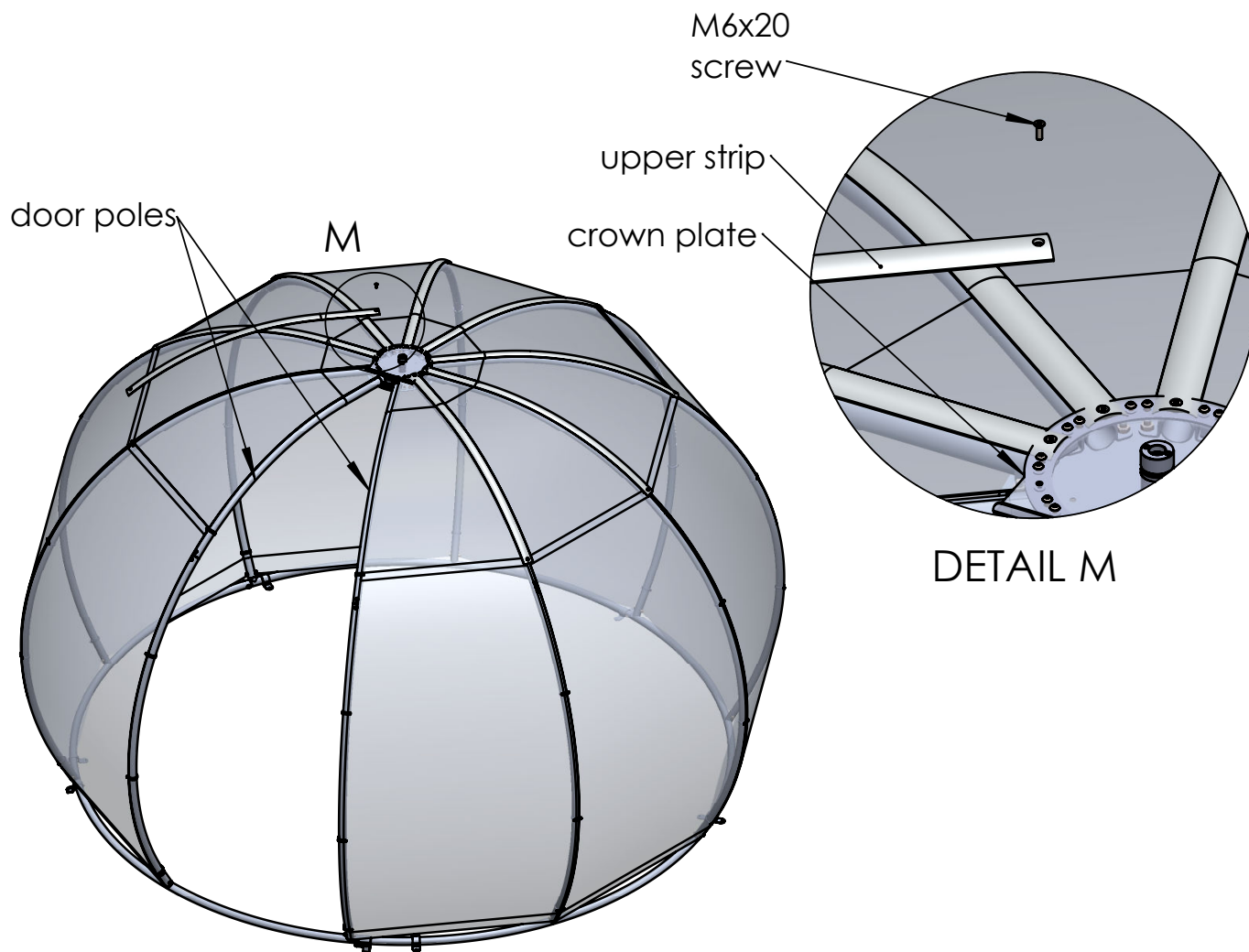


Tools needed



Install the upper strips on the lateral poles by fixing them on the crown plate using M6x20 screws. Proceed in the same way for all the 8 strips.

Do not install the upper strips on to the lateral poles of the door.



1. The frame

1.14 Install the lower strips

Components



8 x lower strips

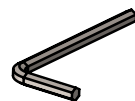


8 x M6x20
screws



24 x M6x12
screws

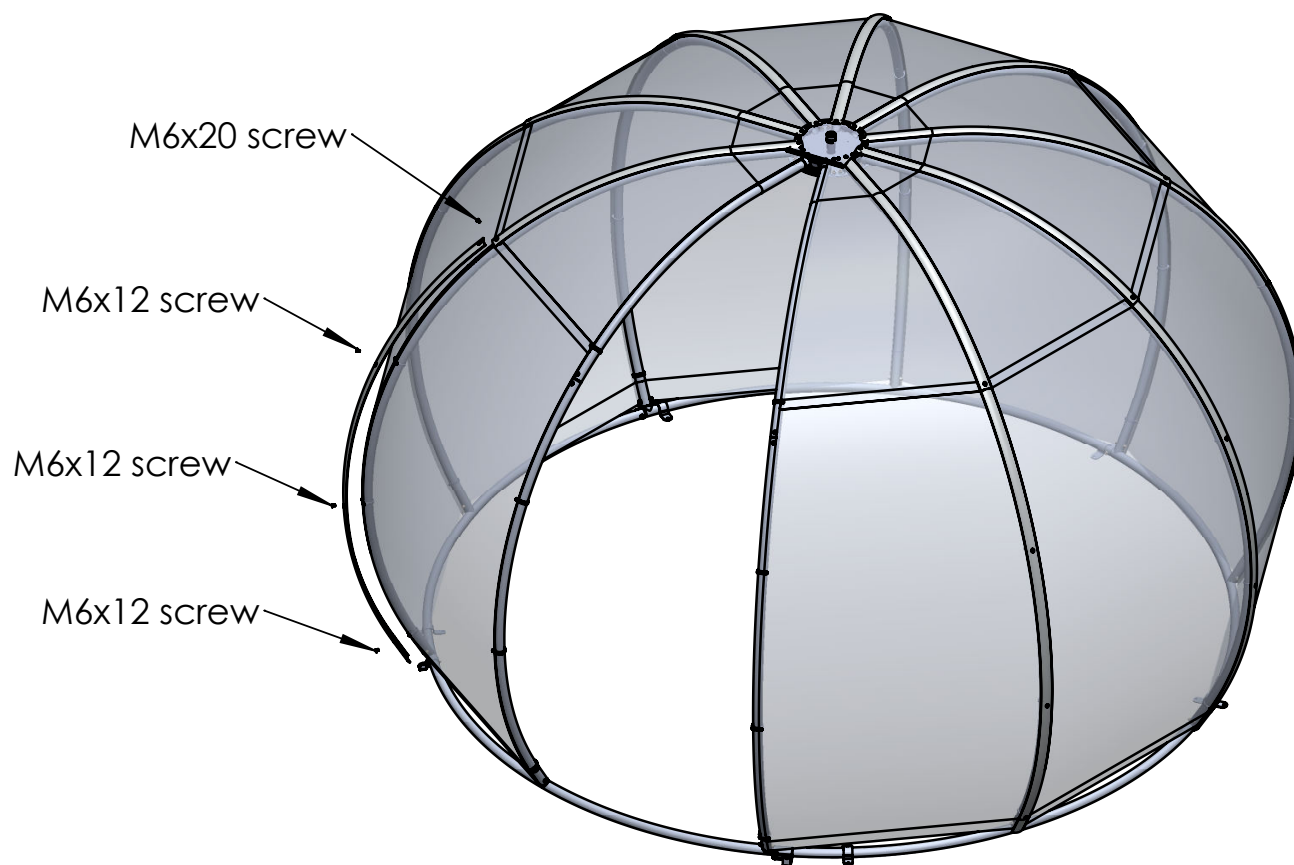
Tools needed



Allen key no.4

Install the lower strips on the lateral poles (except lateral poles of the door) as follows:

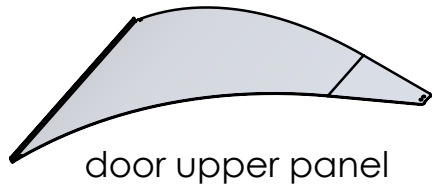
- place the upper part under the lower part of the upper strips
- use M6x20 screws to fix them together, in the upper part, on the frame rings
- use M6x12 screws to fix them on the frame rings in the lower part



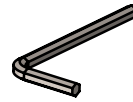
1. The frame

1.15 Install the door upper panel

Components



2 x M6x12

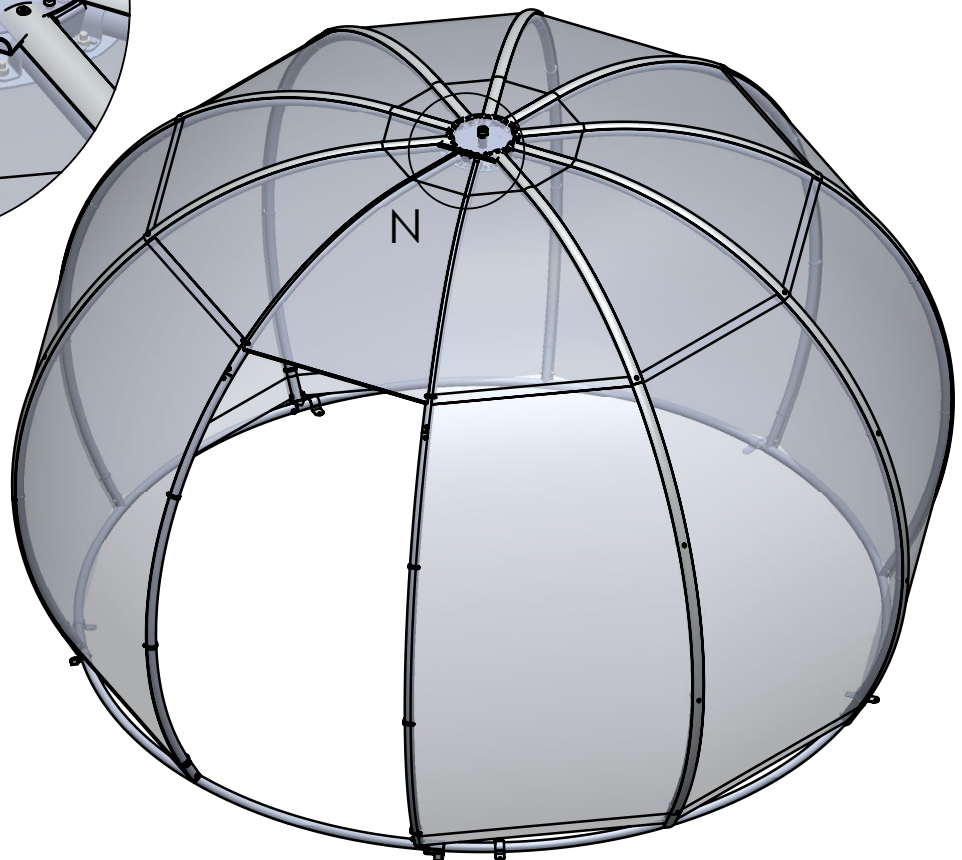
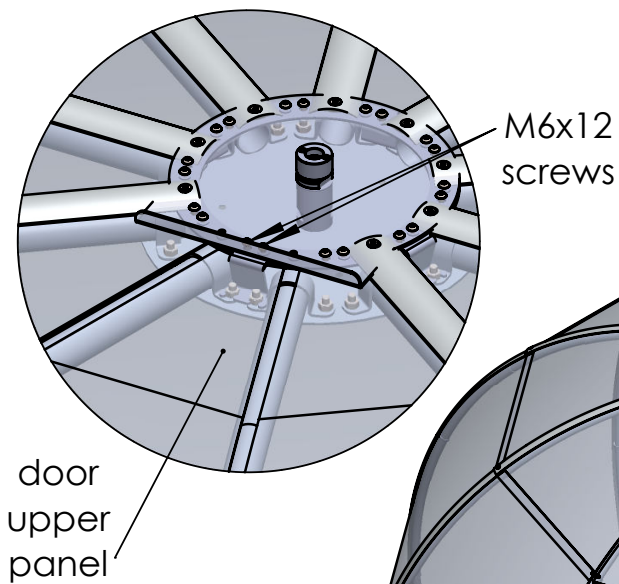


Allen key no.4

Tools needed

Install the door upper panel under the polycarbonate disc. Fix it on the crown plate using 2pcs. of M6x12 screws.

DETAIL N



2. The door

Components



Tools

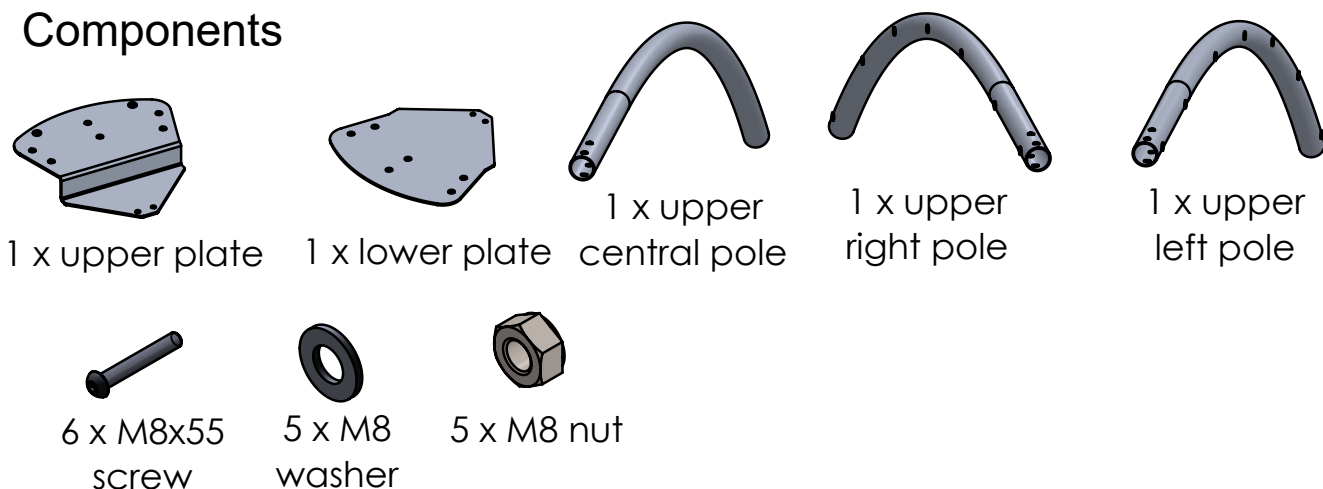


Wrench no.13 Allen key no.4, 5 and 6

2. The door

2.1 Mount the upper poles

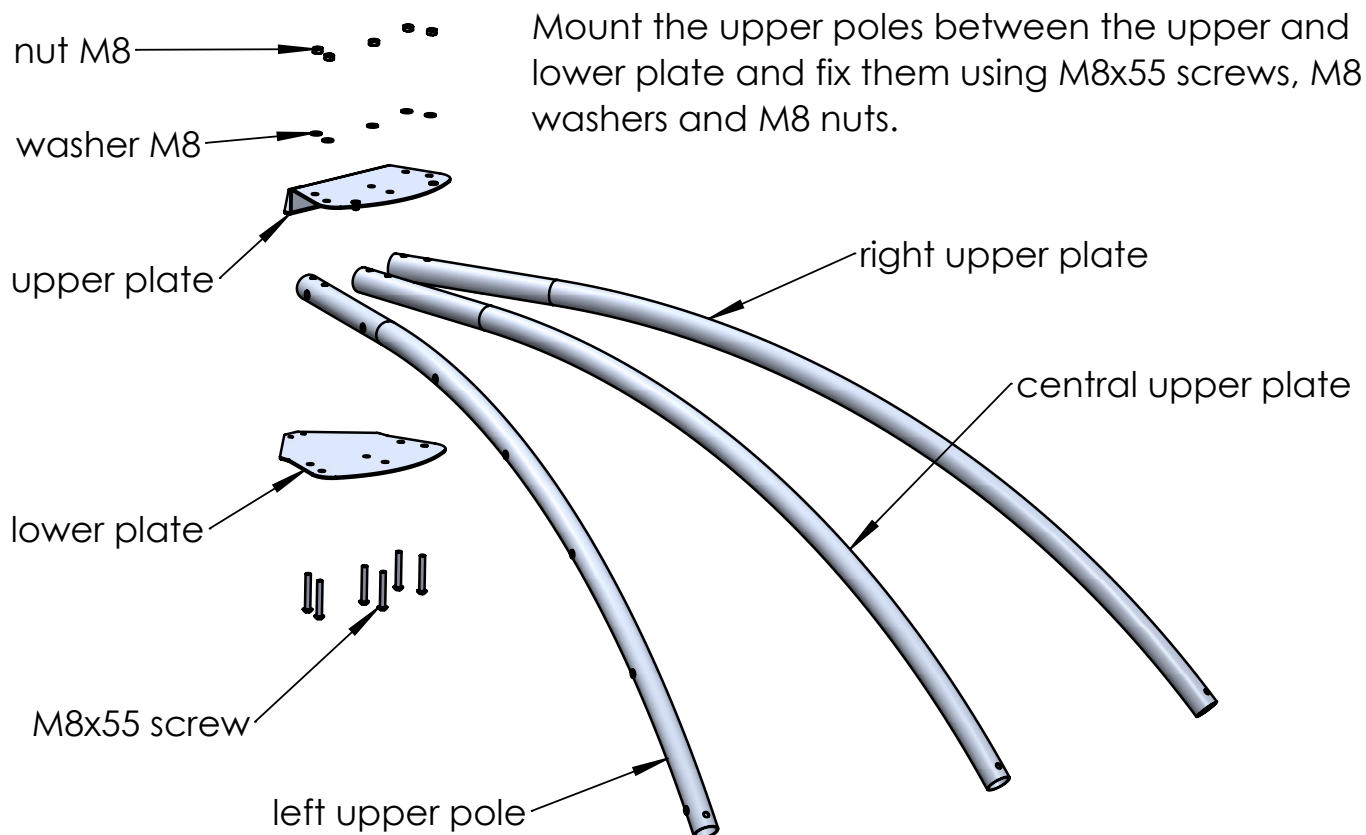
Components



Tools needed



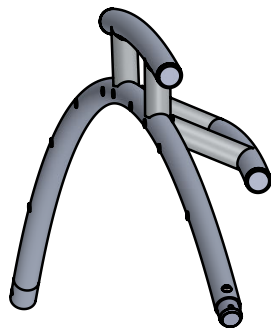
Allen key no.5 Wrench no.13



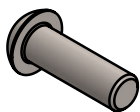
2. The door

2.2 Mount the right lower pole

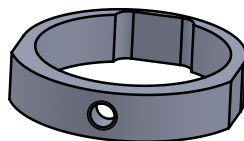
Components



1 x right lower pole

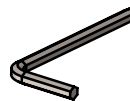


1 x M8x25 screw

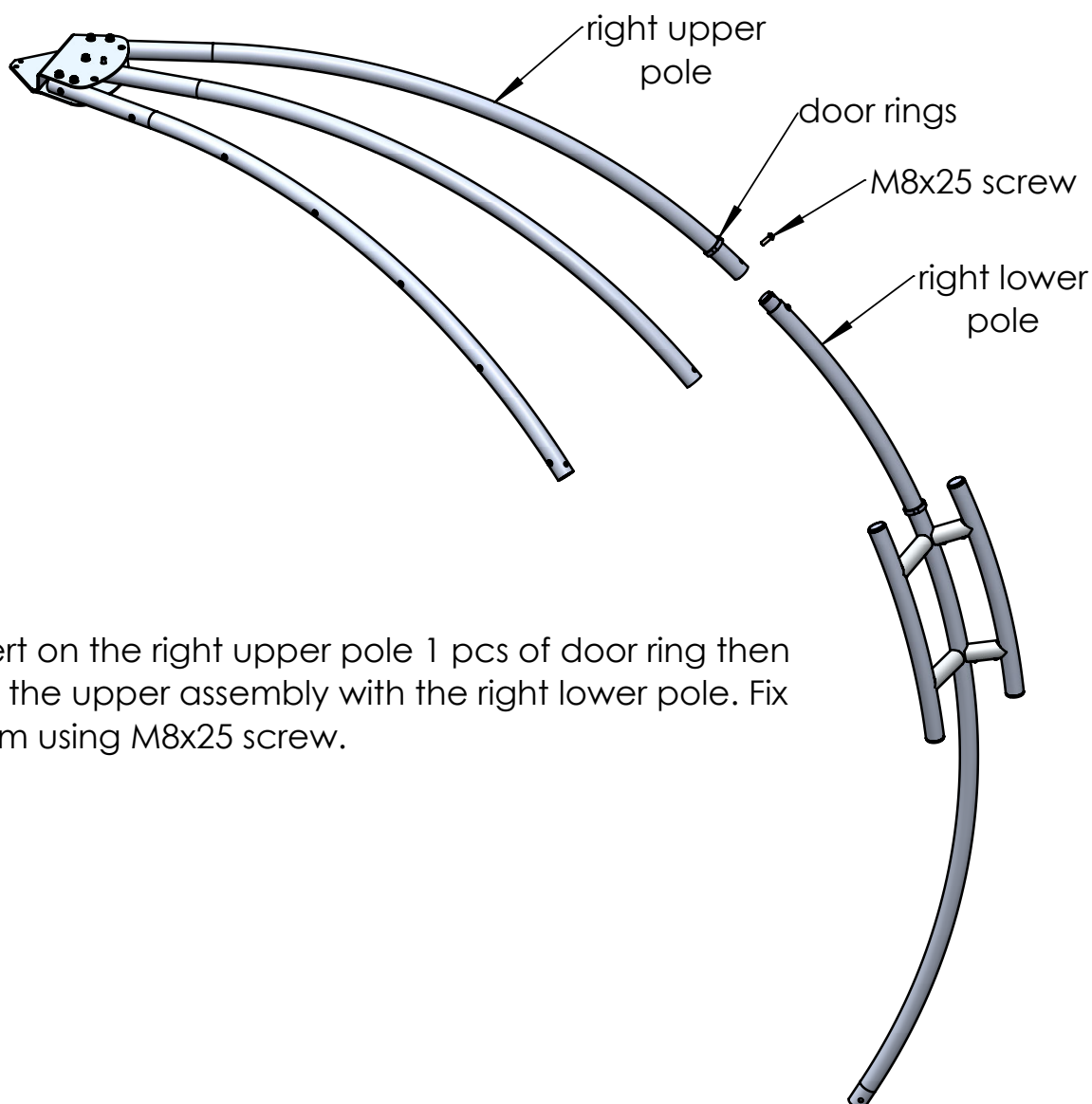


1 x door rings

Tools needed



Allen key no.5

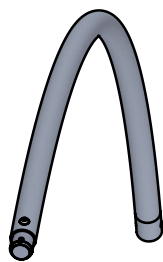


Insert on the right upper pole 1 pcs of door ring then join the upper assembly with the right lower pole. Fix them using M8x25 screw.

2. The door

2.2 Mount the central lower pole

Components



1 x central lower pole

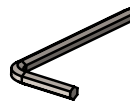


1 x M8x25 screw

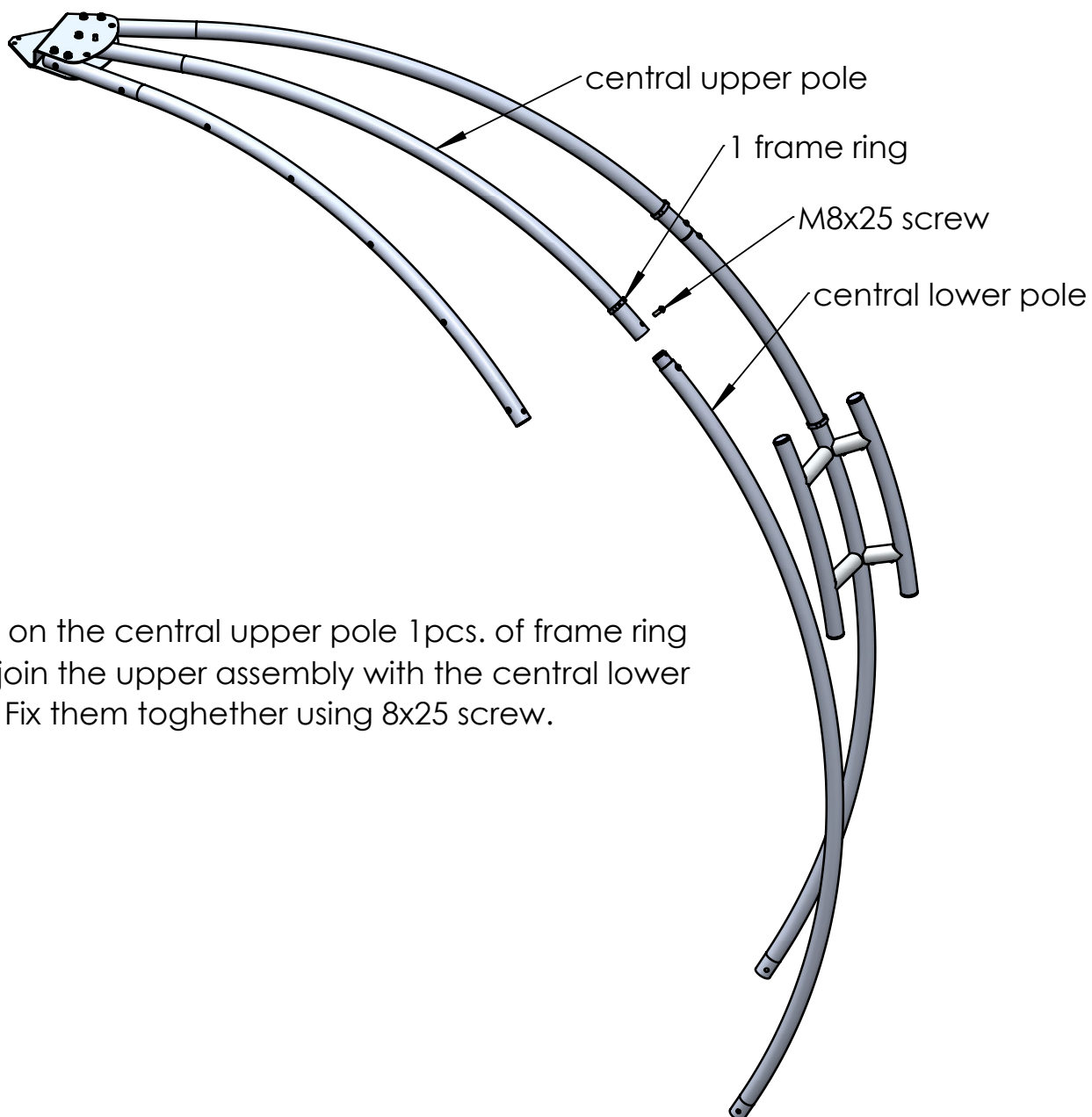


1 x frame ring

Tools needed



Allen key no.5

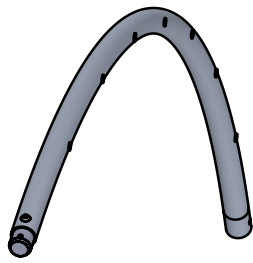


Insert on the central upper pole 1 pcs. of frame ring then join the upper assembly with the central lower pole. Fix them together using 8x25 screw.

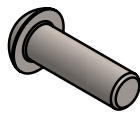
2. The door

2.3 Mount the left lower pole

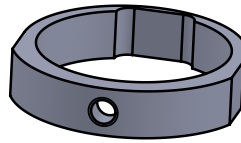
Components



1 x left
lower pole

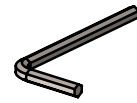


1 x M8x25 screw

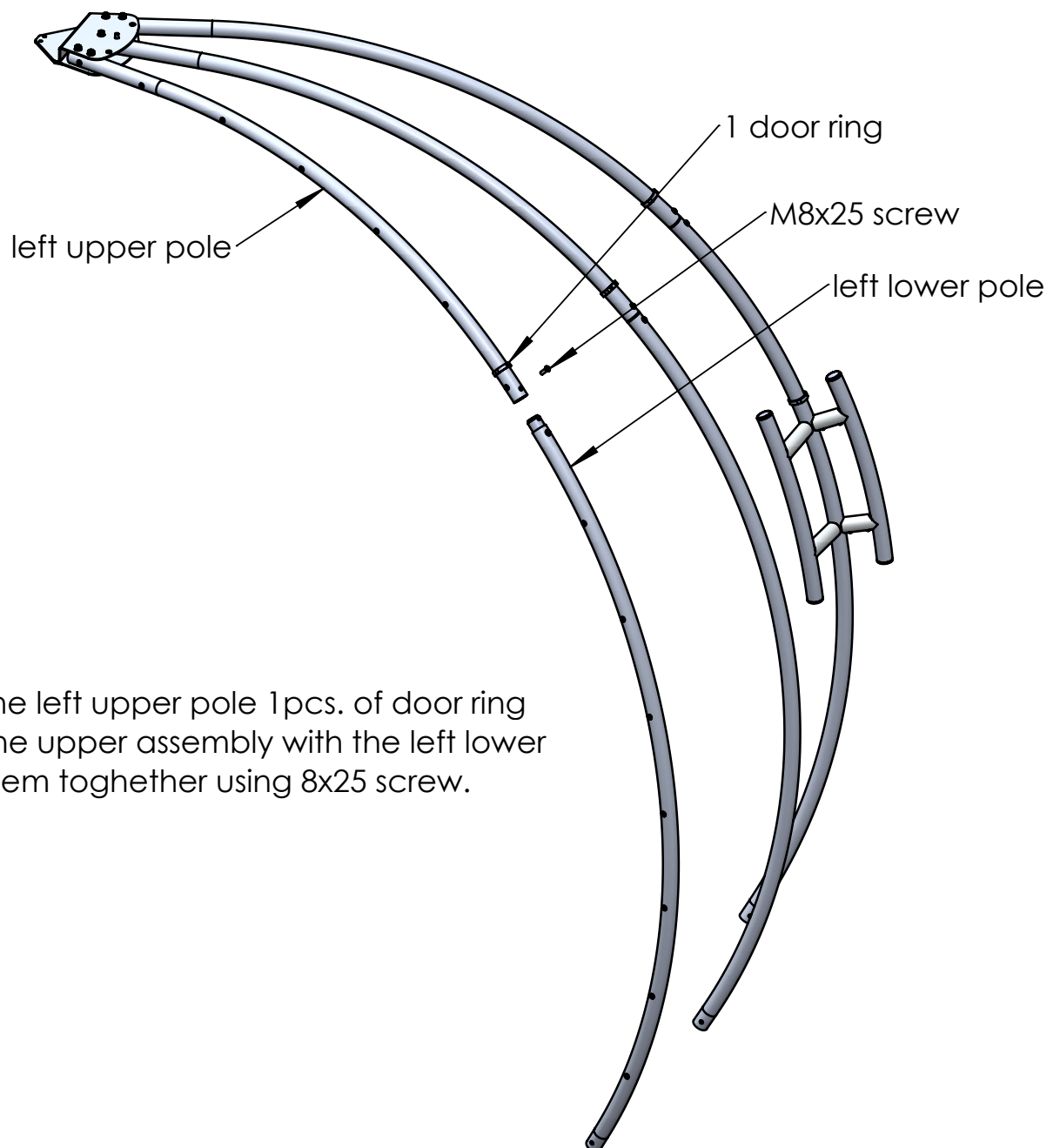


1 x door ring

Tools needed



Allen key no.5

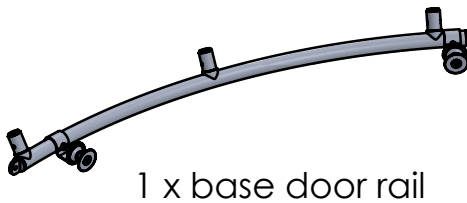


Insert on the left upper pole 1 pcs. of door ring then join the upper assembly with the left lower pole. Fix them together using 8x25 screw.

2. The door

2.4 Mount the base door rail

Components



5 x door ring



3 x frame ring

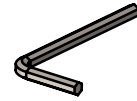


3 x M8x45
screws

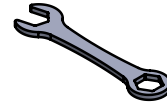


3 x M8 nuts

Tools needed



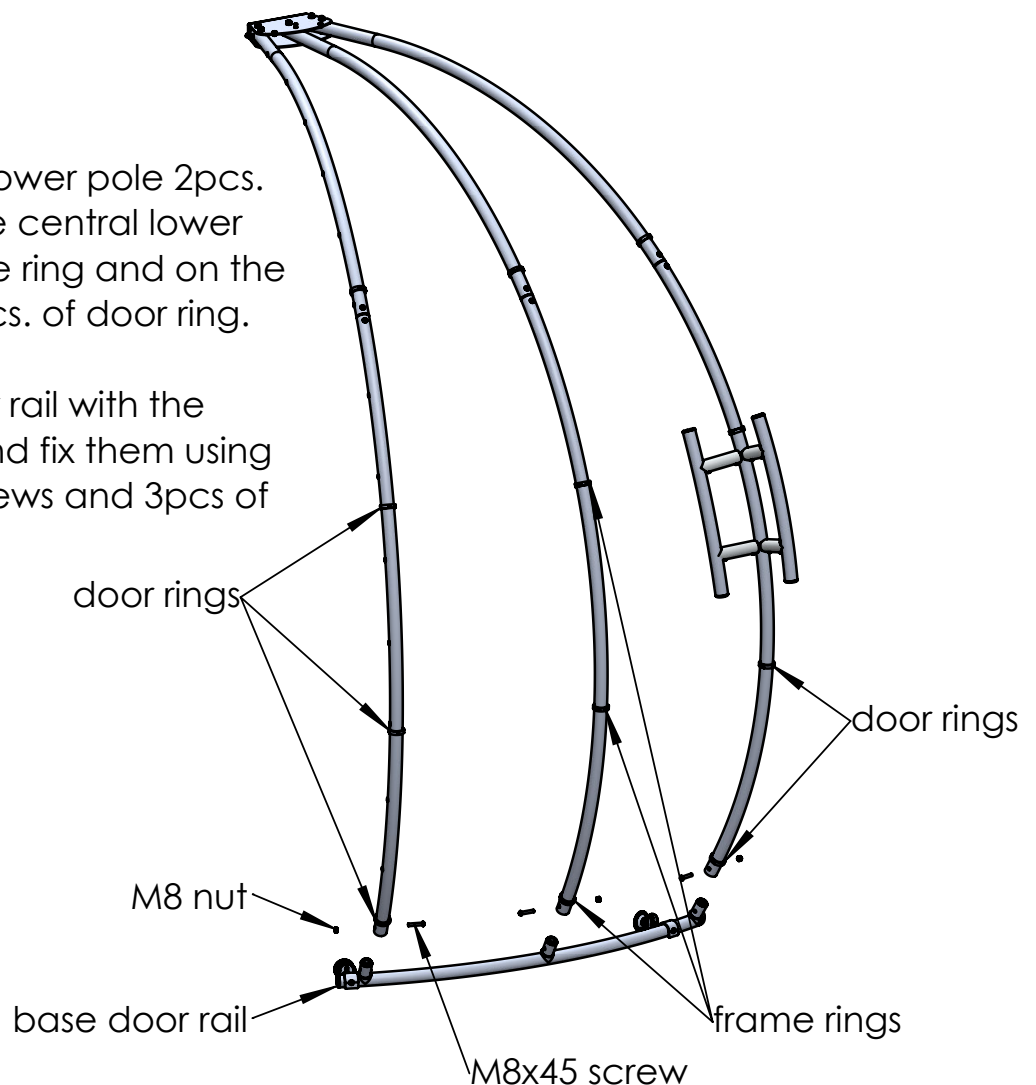
Allen key no.5



Wrench no.13

Insert on the right lower pole 2pcs. of door ring, on the central lower pole 3pcs. of frame ring and on the left lower pole 3 pcs. of door ring.

Join the base door rail with the upper assembly and fix them using 3pcs. of M8x45 screws and 3pcs of M8 nuts.



2. The door

2.5 Install the PVC door sealings

Components

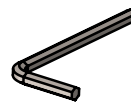
1 x right PVC door sealing

1 x left PVC door sealing

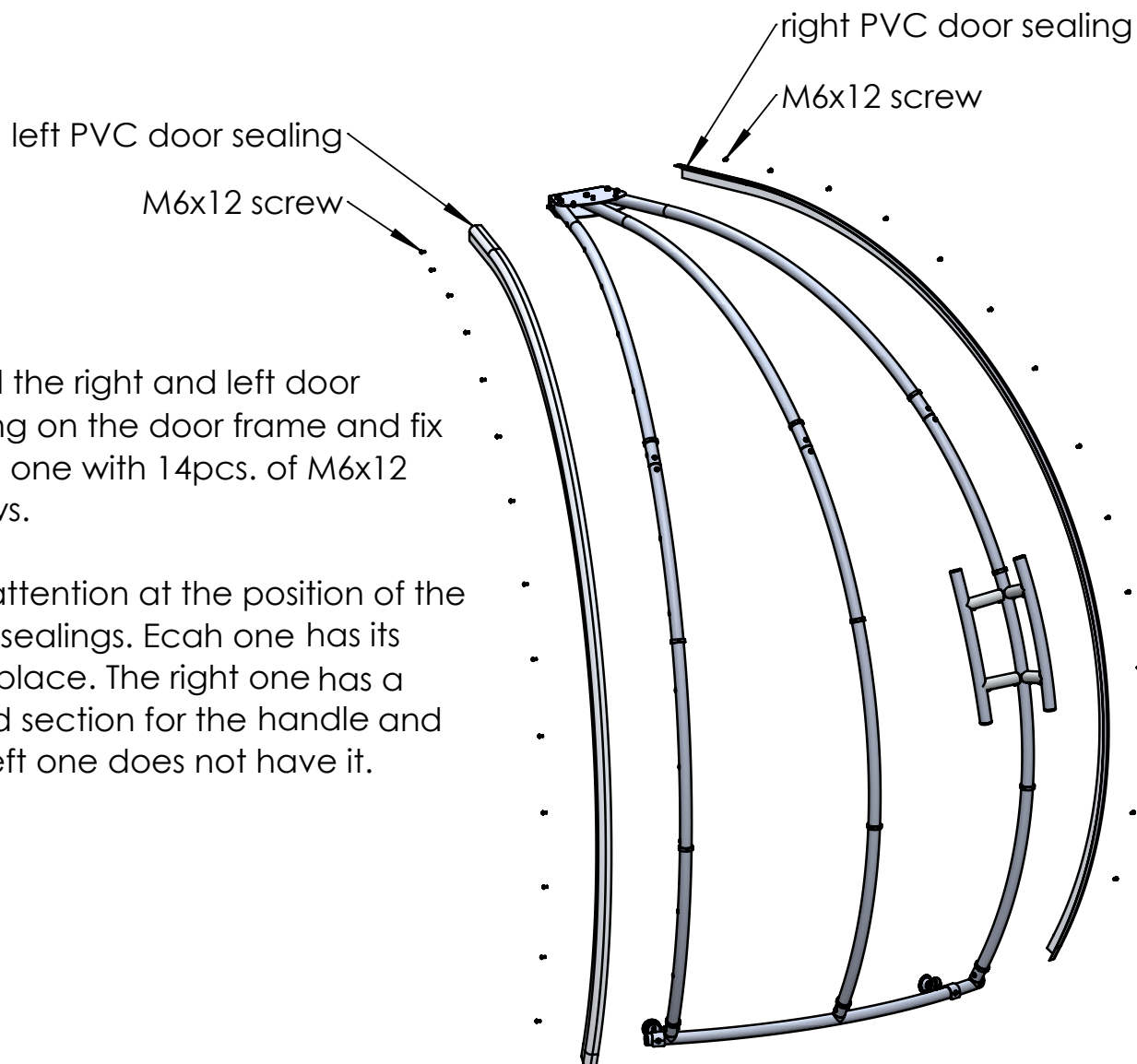
Tools needed



28 x M6x12
screws



Allen key no.4



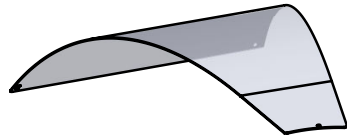
Install the right and left door sealing on the door frame and fix each one with 14pcs. of M6x12 screws.

Pay attention at the position of the door sealings. Each one has its own place. The right one has a cutted section for the handle and the left one does not have it.

2. The door

2.6 Install the upper panels

Components

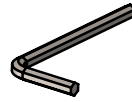


2 x upper panel



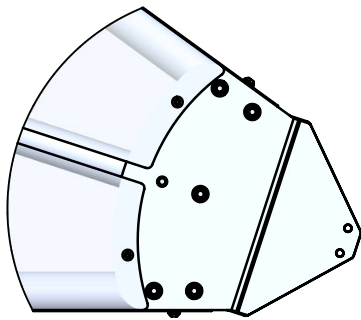
2 x M6x12
screw

Tools needed

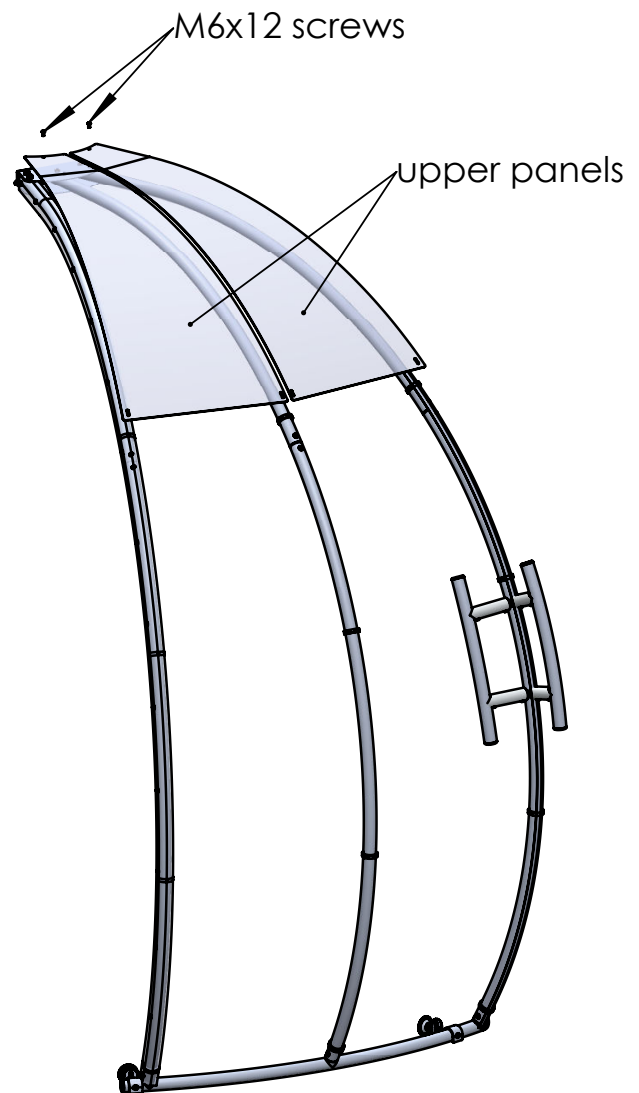


Allen key no.4

Install the upper panels and fix them in the upper part using M6x12 screws.



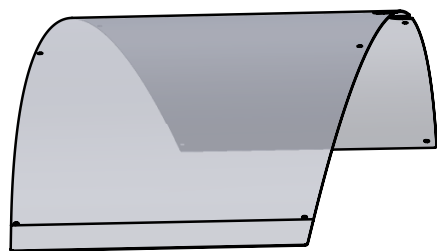
Top view of the door with the
upper panels installed



2. The door

2.7 Install the right lower panels

Components



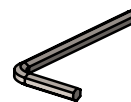
1 x right lower panel



2 x M6x10
screw



6 x M6x8
screw

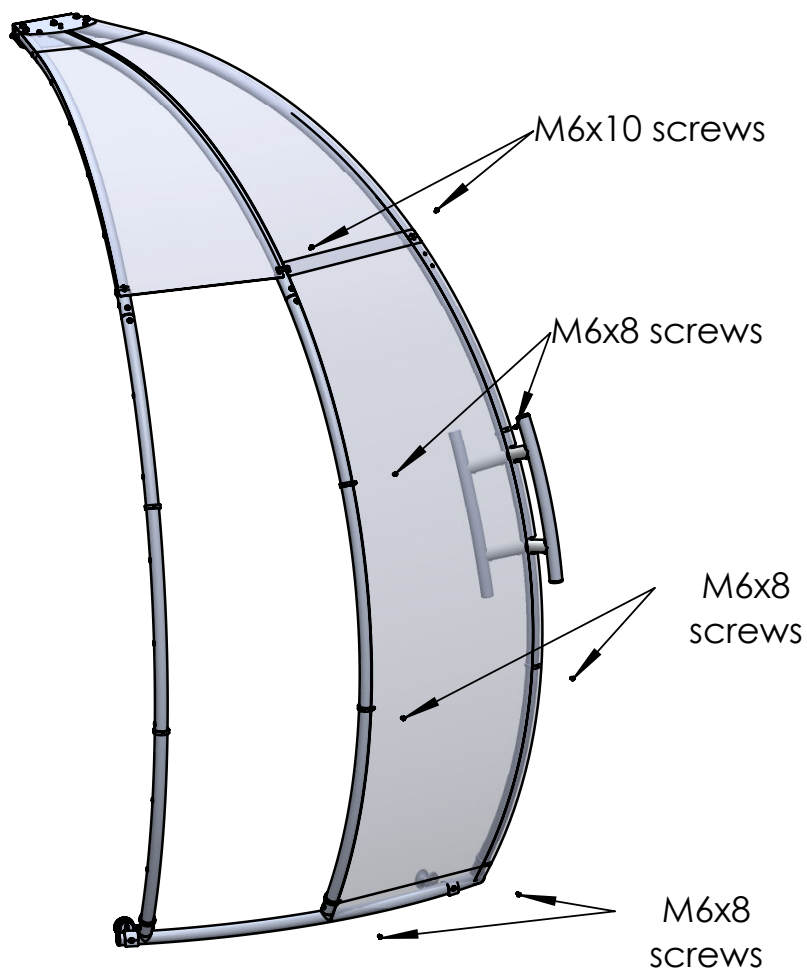


Allen key no.4

Tools needed

Place the upper part of the right lower panel under the right upper panel. Align the lower holes of the upper panel with the upper holes of the lower panel and fix them on the upper rings using 2pcs. of M6x10 screws.

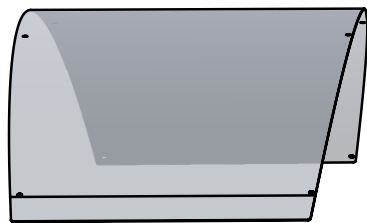
Fix them also in the lower part using 6pcs. of M6x8 screws.



2. The door

2.8 Install the left lower panels

Components



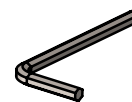
1 x left lower panel



2 x M6x10
screw



6 x M6x8
screw

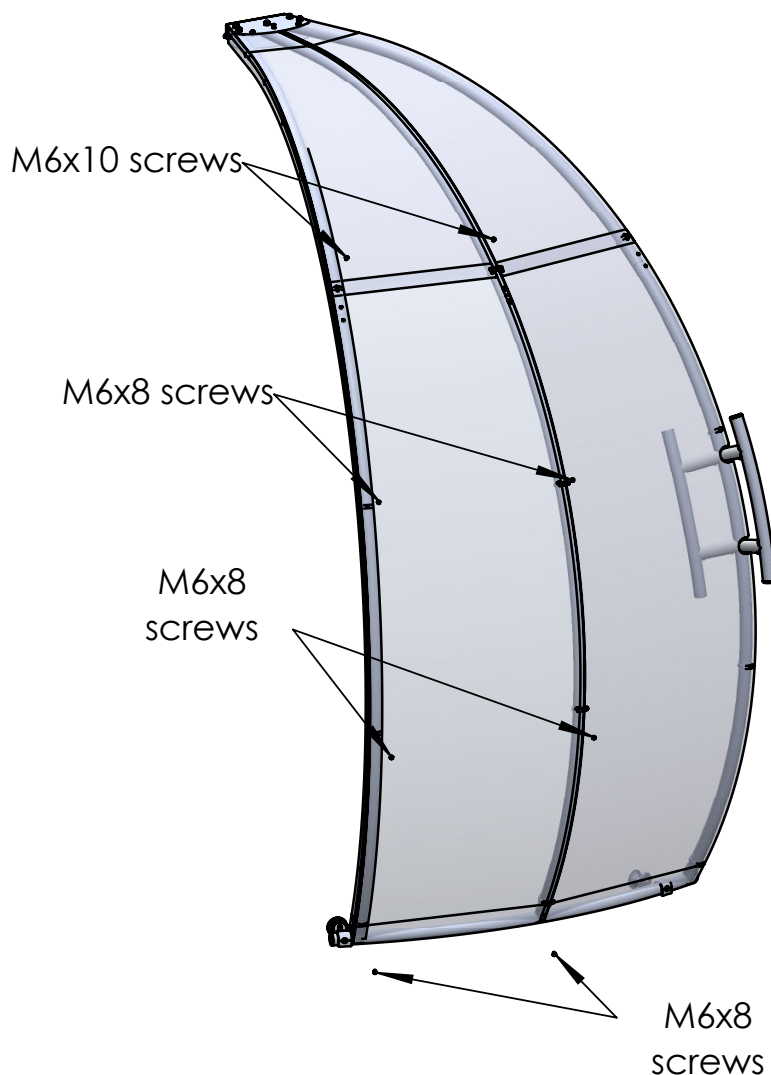


Allen key no.4

Tools needed

Place the upper part of the left lower panel under the left upper panel. Align the lower holes of the upper panel with the upper holes of the lower panel and fix them on the upper rings using 2pcs. of M6x10 screws.

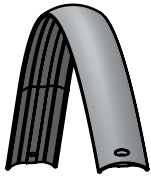
Fix them also in the lower part using 6pcs. of M6x8 screws.



2. The door

2.9 Install the door upper strip

Components



1 x door upper strip

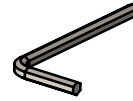


1 x M8
washer

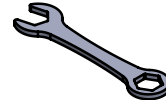


1 x M8 nut

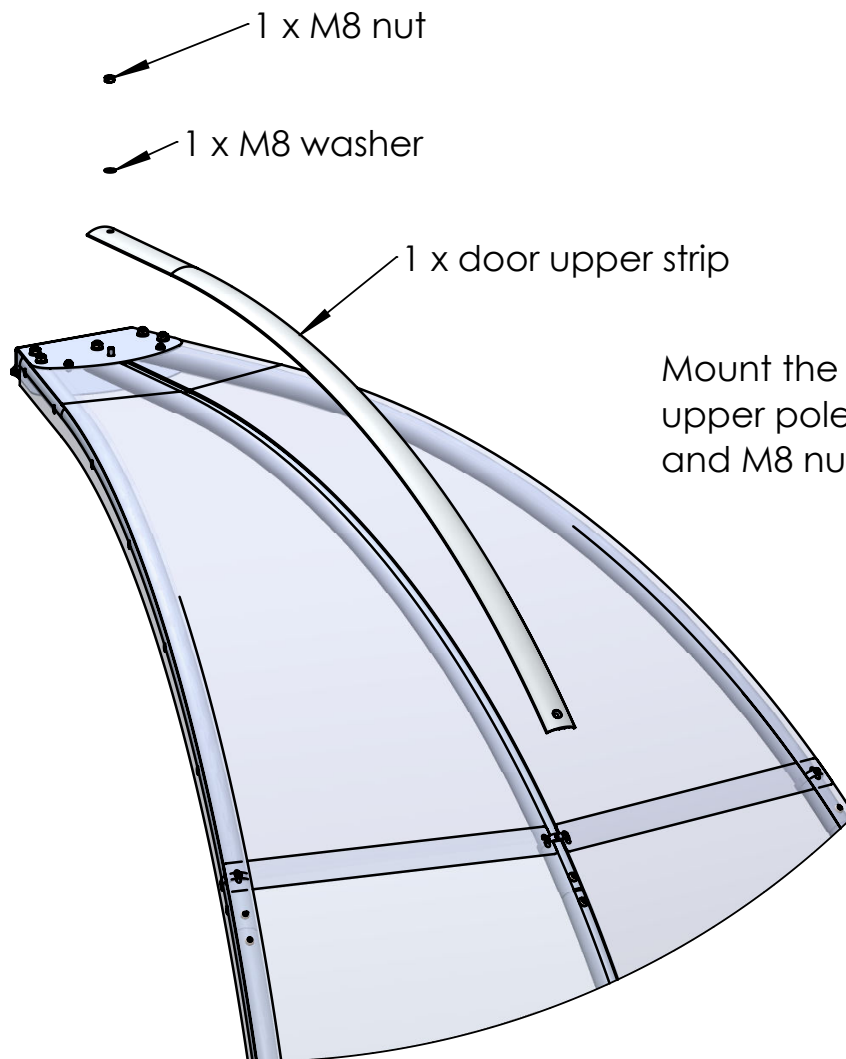
Tools needed



Allen key no.5



Wrench no.13

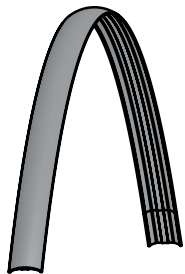


Mount the upper strip on the central upper pole and fix it using M8 washer and M8 nut as shown.

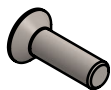
2. The door

2.9 Install the door lower strip

Components



1 x door lower strip

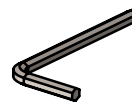


1 x M6x20
screws

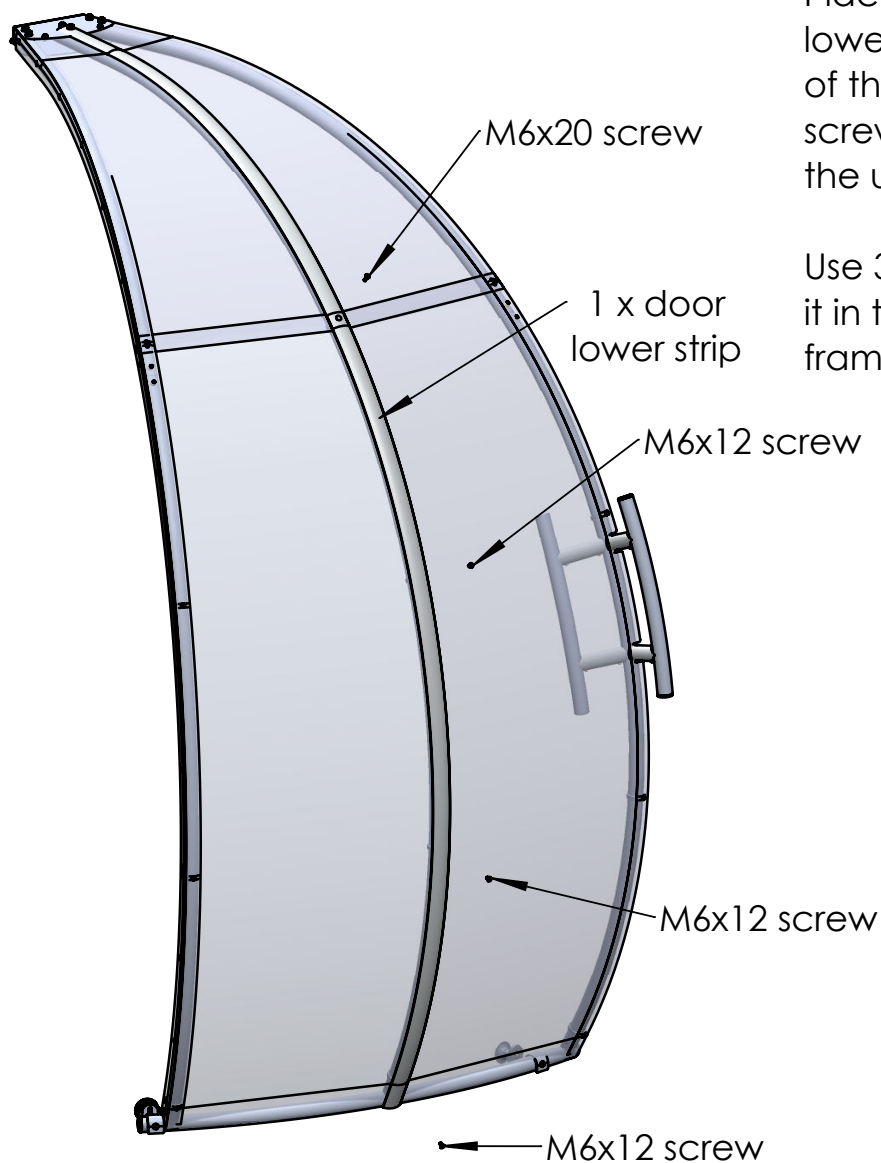


3 x M6x12
screws

Tools needed



Allen key no.4

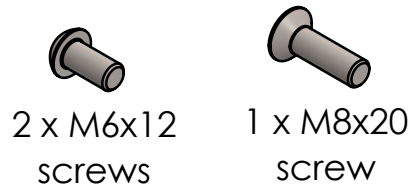


Place the upper part of the lower strip under the lower part of the upper strip. Use M6x20 screw to fix them together on the upper frame ring.

Use 3pcs. of M6x12 screws to fix it in the lower part on the lower frame rings.

Mount the door on the frame

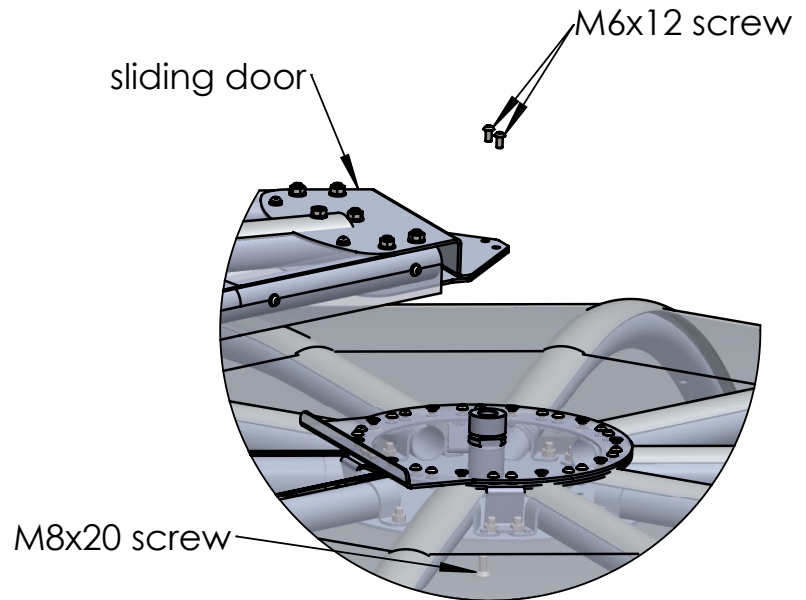
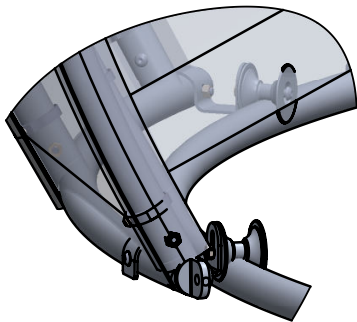
Components



Tools needed

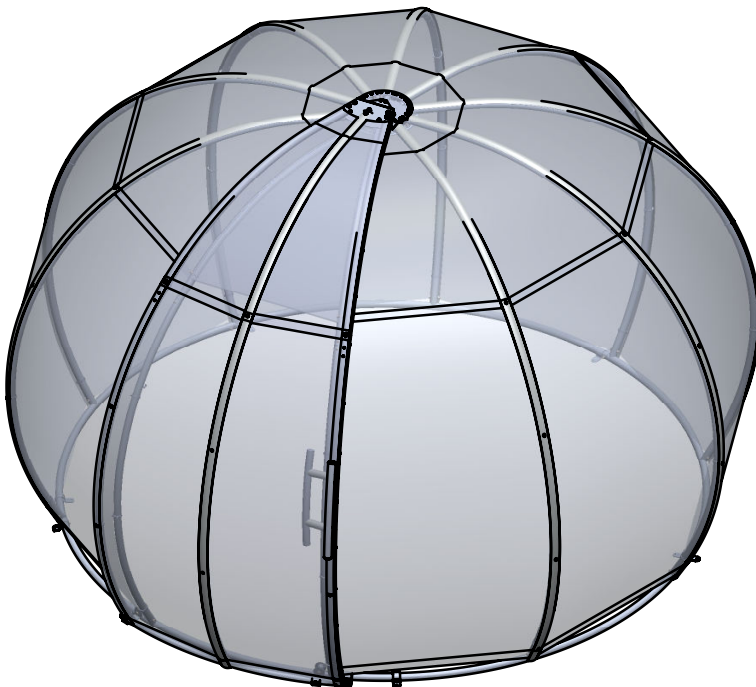


1. Place the wheels on the door rail



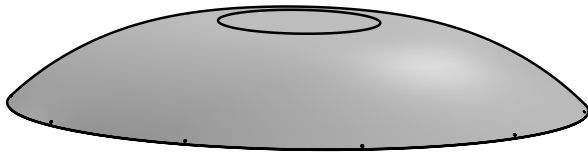
2. Fix the door on the upper bolt using 2pcs. of M6x12 screws. Fix the upper bolt on the support plate using M8x20 screw.

3. Pass the left door lower panel over the left wheel.



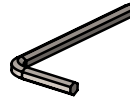
3. The umbrella

Components



1 x Umbrella cover

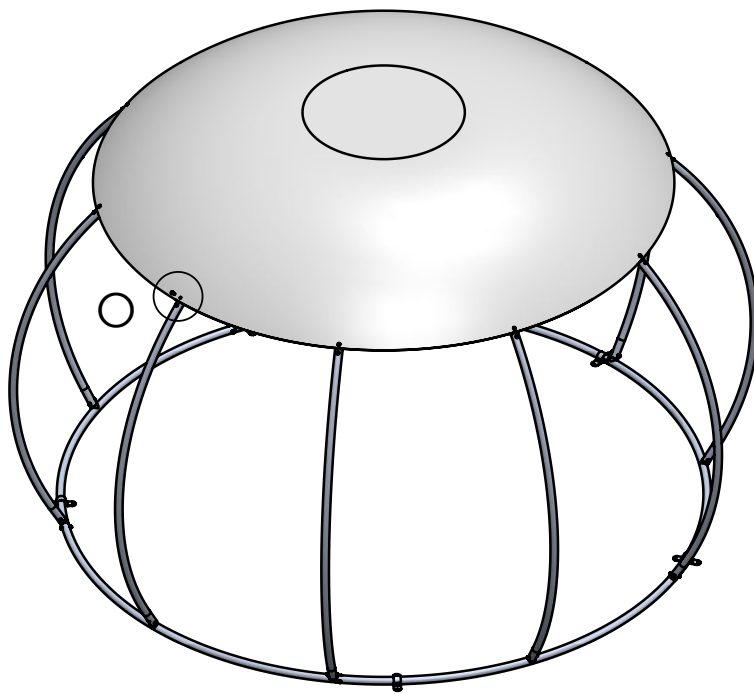
Tools needed



Allen key no.5

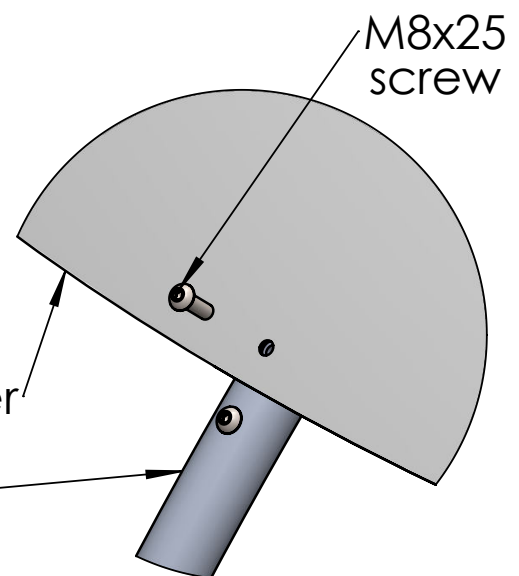
To install the umbrella cover you have to remove the sliding door and the previous cover.

Unscrew the upper M8x25 screws that fix the upper poles on the lower poles. Place the cover on the frame and align the holes of it with the holes of the upper poles as shown. Use the same screw to fix it on each pole.



umbrella cover

lower pole



DETAIL O